



For the most
up-to-date product
information, visit
KulzerUS.com

Product Showcase

Dental Practice & Laboratory

Giving a hand to oral health.



KULZER
MITSUI CHEMICALS GROUP

Giving a hand to oral health.

As a preferred partner to dental professionals, we help our customers restore patient’s oral health in a safe, more convenient and cost-effective way. Our mission is to develop and provide best-in-class quality products and services that create reliable solutions.

Kulzer has been a proud member of the Mitsui Chemicals Group since 2013. Mitsui is a global supplier of innovative chemical products for the health care, automotive, agriculture, housing, and environmental protection sectors.

Kulzer solutions include Venus® composites, Flexitime® and Xantasil® impression materials, iBOND® bonding agents, GLUMA® desensitizers, Venus White® teeth whitening, Pala® teeth and digital dentures, cara® Digital Solutions, precious metal refining, and more.

Kulzer Products by Brand			
dimas Print Materials / cara LEDcure	22	Pala teeth: Mondial & Mondial i, Delara, Artic, Artic Digital, Mondial i Digital	26
cara Print Clean Pro / cara Scan Pro	23	Pala acrylics: Palapress vario, Paladon 65	29
Charisma: ABC	13	Precious Metal Refining	30
Flexitime: VPS, Dynamix speed	17	Translux Wave	14
Flexitime: Xtreme 2, Fast & Scan, Bite	18	Venus Bulk Fill	12
GLUMA: Desensitizer, Desensitizer PowerGel	7	Venus Diamond	10
iBOND: Universal, Total Etch	15	Venus Diamond Flow	13
Ivory: ReLeaf, LinguaGuard	6	Venus ONE: Diamond, Pearl	9
Ivory: Rubber Dam, Clamps	5	Venus Pearl	11
Modern Materials: Gypsum	20	Venus Supra	14
Modern Materials: Wax	21	Venus Temp 2	16
Kulzer Workflows 2.0	25	Venus White: Max, Pro	8
Pala Digital Dentures	24	Venus White: Ultra, Ultra +	9
Palajet & Palamat Premium	28	VK Solutions: VibraKleen E², VacuKleen E², Dri-Clave VK	4
Pala: Lab Putty, Polish, cre-active / HiLite Pre 2	27	Xantasil: Alginate Substitute	19

This book showcases our key products, brands and services. To see Kulzer’s complete portfolio, please visit kulzerUS.com.

Kulzer Product Portfolio by Indication

pg. 4	pg. 5-6	pg. 7-8	pg. 9	pg. 10-15	pg. 16-19	pg. 22-25	pg. 30-31
Ultrasonic Cleaning	Isolation & Suction	Whitening	Preventive	Direct Restorative	Indirect Restorative	CAD/CAM	Precious Metal Refining
VibraKleen <ul style="list-style-type: none">• Tablets Dri-Clave <ul style="list-style-type: none">• Solutions VacuKleen <ul style="list-style-type: none">• Evacuation System Cleaner	Ivory <ul style="list-style-type: none">• Rubber Dam• Clamps• Hands-free Suction• Accessories	Venus White <ul style="list-style-type: none">• In-office• Custom Take-home• Pre-filled Trays• Maintenance & Oral Care Products	GLUMA <ul style="list-style-type: none">• Desensitizer	Venus <ul style="list-style-type: none">• Filling Materials Charisma <ul style="list-style-type: none">• Filling Materials iBOND <ul style="list-style-type: none">• Adhesives Translux <ul style="list-style-type: none">• Venus Supra• LED Curing Light	Flexitime <ul style="list-style-type: none">• A-Silicone VPS• Bite Registration Xantasil <ul style="list-style-type: none">• Alginate Substitute Venus <ul style="list-style-type: none">• Temporary Material	Pala <ul style="list-style-type: none">• Digital Dentures cara <ul style="list-style-type: none">• 3D Printing.• Intraoral Scanning dimas <ul style="list-style-type: none">• Print Materials	<ul style="list-style-type: none">• Scrap Refining• Complimentary Shipping Materials• Autoship Program

pg. 20-21	pg. 26	pg. 27-29	pg. 22-25	pg. 28	pg. 30-31
Modeling & Work Prep	Denture Teeth	Denture Materials	CAD/CAM	Devices & Equipment	Precious Metal Refining
Modern Materials <ul style="list-style-type: none">• Dental Plasters• Dental Waxes• Modeling Materials	Pala <ul style="list-style-type: none">• Mondial/Mondial i• Basic• Artic• Accessories	Pala <ul style="list-style-type: none">• Cold Curing Acrylics• Heat Curing Acrylics• Characterization• Finishing• Manufacturing & Equipment• Accessories	Pala <ul style="list-style-type: none">• Digital Dentures cara <ul style="list-style-type: none">• 3D Printing <ul style="list-style-type: none">• Impression & Model Scanning dimas <ul style="list-style-type: none">• Print Materials	<ul style="list-style-type: none">• Casting Machines• Electroforming Unit• Injection Unit• Polymerization Units• Ceramic Furnace	<ul style="list-style-type: none">• Scrap Refining• Complimentary Shipping Materials• Autoship Program

Ultrasonic Cleaning

VibraKleen™ E² Ultrasonic Cleaning Tablets

The natural power of enzymes.

- Powerful protease enzymes quickly remove and breakdown hard to clean deposits like blood, bone, and food particles that chemical detergents can leave behind.
- Powerful, yet gentle on your equipment.
- Biodegradable and pH neutral.
- Non-toxic, non-corrosive formula contains no chlorine or harsh alkaline to damage your expensive stainless steel equipment.

Dri-Clave® VK Ultrasonic Cleaning Solutions

Powerful cleaning with minimal effort.

- Specially formulated for ultrasonic cleaning.
- Eliminates hand scrubbing of instruments.
- Deep cleans as part of asepsis control program.
- Color coded for easy identification.



VibraKleen E2 Ultrasonic Cleaning Tablets are the perfect companion for easily cleaning Ivory ReLeaf.*

*Use tablets to clean hoses, coupler, and U-shaped connectors, not disposable leaves.

VibraKleen E2 Ultrasonic Cleaning Tablets	
VibraKleen E ² Enzyme Ultrasonic Tablets Box of 20 (Case Lot 24)	50037100
VibraKleen E ² Enzyme Ultrasonic Tablets Clinic Pack–Box of 80 (Case Lot 12)	50037101

Dri-Clave VK Ultrasonic Cleaning Solutions*	
VK-1 General Purpose Cleaner Non-Ammoniated (Gallon)	50036202
VK-3 Plaster and Stone Remover (Gallon)	50036206
VK-4 Tartar and Stain Remover (Gallon)	50036208
VK-6 Temporary Cement Remover (Gallon)	50036212

*Each VK solution sold in case lots of four (4) gallons only.

VacuKleen™ E² Evacuation System Cleaner

Cleans with a lemon flash.

- Highly effective powder formula.
- Environmentally friendly and safe to work with.
- Power of protease enzymes.

VacuKleen E2 Evacuation System Cleaner	
VacuKleen E ² Evacuation Cleaners Unit Dose Pouch for Quarts Intro Pack – Box of 60 Pouches (Case Lot 24 x 7 gm)	50036100
VacuKleen E ² Evacuation Cleaner Unit Dose Pouch for Quarts Clinic Pack – Box of 140 Pouches (Case Lot 12 x 7 gm)	50036101
VacuKleen E ² Evacuation Cleaner Unit Dose Pouch for Gallons Clinic Pack – Box of 25 Pouches (Case Lot 24 x 28 gm)	50036102

Isolation & Suction

Ivory® Rubber Dam & Clamps

Everything you need to achieve perfect isolation.

- Natural latex and non-latex rubber dam materials available in a range of colors and sizes
- Stainless steel clamps are die-cut, heat-treated, hand-set, and tempered to guarantee secure dam placement

NEW
Expanded Line
of Products



Ivory Clamps			
Complete Rubber Dam Kit (Punch, Forceps, Rubber Dam, Frame, 8 Clamp Starter Kit, and Template)	50057966	Anterior Clamps	
		Stainless Steel Clamp No. 6	50057382
		Stainless Steel Clamp No. 9	50057384
Rubber Dam Clamp Starter Kit (8 Clamps: 0, 2, 2A, 7, 8A, 9, 14, 14A)	50057968	Tiger Clamps	
Winged Clamps		Stainless Steel Clamp No. 1T	50057841
		Stainless Steel Clamp No. 2T	50057843
		Stainless Steel Clamp No. 2AT	50057847
		Stainless Steel Clamp No. 9T	50057855
		Stainless Steel Clamp No. 14T	50057849
		Stainless Steel Clamp No. 14DT	50057857
		Stainless Steel Clamp No. 56T	50057853
		Wingless Clamps	
		Stainless Steel Clamp No. W2	50057510
		Stainless Steel Clamp No. W2A	50057512
		Stainless Steel Clamp No. W3	50057522
		Stainless Steel Clamp No. W8A	50057536
		Stainless Steel Clamp No. W14A	50057556
		Stainless Steel Clamp No. W0	50057504
		Stainless Steel Clamp No. W1	50057506
		Stainless Steel Clamp No. W4	50057524
		Stainless Steel Clamp No. W5	50057526
Stainless Steel Clamp No. 00	50057302	Stainless Steel Clamp No. W7	50057528
Stainless Steel Clamp No. 0	50057304	Stainless Steel Clamp No. W8	50057534
Stainless Steel Clamp No. 1	50057306	Stainless Steel Clamp No. W14	50057554
Stainless Steel Clamp No. 2	50057310	Stainless Steel Clamp No. W14	50057728
Stainless Steel Clamp No. 2A	50057312	Stainless Steel Clamp No. 26N	50057728
Stainless Steel Clamp No. 3	50057322	Stainless Steel Clamp No. 27N	50057730
Stainless Steel Clamp No. 4	50057324	Stainless Steel Clamp No. 28N	50057732
Stainless Steel Clamp No. 7	50057328	Stainless Steel Clamp No. 28N	50057732
Stainless Steel Clamp No. 8	50057334	Stainless Steel Clamp No. W56	50057568
Stainless Steel Clamp No. 8A	50057336		
Stainless Steel Clamp No. 12A	50057348		
Stainless Steel Clamp No. 13A	50057352		
Stainless Steel Clamp No. 14	50057354		
Stainless Steel Clamp No. 14A	50057356		
Stainless Steel Clamp No. 56	50057374		
Stainless Steel Clamp No. 1A	50057308		
Stainless Steel Clamp No. 5	50057326		
Stainless Steel Clamp No. 7A	50057330		
Stainless Steel Clamp No. 10	50057338		
Stainless Steel Clamp No. 11	50057342		
Stainless Steel Clamp No. 26	50057370		
Stainless Steel Clamp No. 27	50057372		

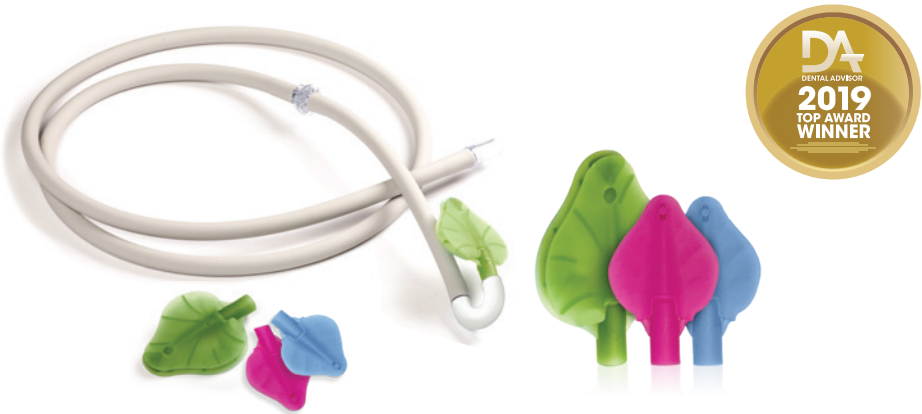
Ivory Rubber Dam	
Premium Rubber Dam	
Blue Medium 5" x 5"– 52 Sheets	66094058
Blue Medium 6" x 6"– 36 Sheets	66094053
Blue Thin 6" x 6"– 36 Sheets	66094052
Blue Heavy 6" x 6"– 36 Sheets	66094054
Mint 5" x 5"– 52 Sheets	66094059
Mint 6" x 6"– 36 Sheets	66094055
Non Latex Medium Mint 5" x 5"– 52 Sheets	66094060
Non Latex Medium Mint 6" x 6"– 36 Sheets	66094057
Black 6" x 6"– 36 Sheets	66094056
Accessories	
Rubber Dam Products	
Rubber Dam Forceps	50057220
Rubber Dam Punch	50057225
Rubber Dam Frames	
Adult Frame (6 in)	50057230
Pedo. Frame (5 in)	50057229
Rubber Dam Template	
Template 6" x 6"	66095030

Isolation & Suction

Ivory® ReLeaf™ and Ivory® ReLeaf™ Minis
Dentistry’s best hands-free suction solution.

ReLeaf ensures that every practitioner can continually provide comfort and efficiency to any dental appointment. With 280 degrees of suction, you never have to worry about suction location again.

- Hands-free, high-volume efficiency.
- Soft, comfortable and universal mouthpiece for your patients.
- Simple setup—connects to existing HVE system in < 60 seconds.
- Leaves also available in 25% smaller size, perfect for pediatric patients



Ivory ReLeaf	
ReLeaf Standard Kit 100 Leaves (2 x 50 packs), 2 long HVE hoses, 6 short quick-disconnect hoses, 6 U-shaped connectors	66075335
ReLeaf Pro Kit 200 Leaves (4 x 50 packs), 2 long HVE hoses, 6 short quick-disconnect hoses, 6 U-shaped connectors	66075336
ReLeaf 50 Refill 50 leaves	66075339
ReLeaf 100 Refill 100 leaves	66075340
ReLeaf Hose Accessory Kit 2 long HVE hoses, 4 short quick-disconnect hoses, 4 U-shaped connectors	66075344
ReLeaf U-Shaped Connector Refill 6 U-shaped connectors	66075376
ReLeaf Minis 100 Refill 100 mini leaves	66087296



NEW Ivory ReLeaf Autoship Program
ReleafAutoship.com
Receive automatic delivery of your ReLeaf Refills.
Select and update delivery options to meet your needs.

Ivory® LinguaGuard™
Safe and effective retraction—made simple.

LinguaGuard is a disposable, convenient add-on that allows for retraction and protection of the tongue during suction, by attaching to the vented end of a high volume evacuator (HVE) tip.

- Wrap design ensures strong fit and support.
- Curved design ensures safe retraction with no discomfort.
- Retract with ease with no “tissue suck” risk.
- Larger surface area makes the HVE Tip far more safe, effective, and comfortable.
- Simple design slides easily onto the HVE Tip.



Ivory LinguaGuard	
LinguaGuard 100 ct. 100 HVE retraction aids	66076088

Preventative Solutions

GLUMA® Desensitizer
Under every restoration.

For less than \$1 per application, **GLUMA** is the gold standard and the absolute best insurance policy for fast, effective, and long-term desensitization and improved patient satisfaction.



- GLUMA provides a hermetic seal that acts as a microbial barrier, inhibiting bacterial growth.
- GLUMA is the only desensitizer proven to penetrate exposed dentinal tubules up to 200µ.
- Resurrects collapsed collagenous fibers, improving adhesive bond strength.



Gluma Desensitizer	
Gluma Desensitizer (5 ml)	65872354
Gluma Desensitizer Clinic Pack (3 x 5 ml)	66018221
Gluma Desensitizer, Single Dose (40 x 0.075 ml)	66001854
Application Brushes 2 Pack (50 Pkg)	66064661

GLUMA®
Desensitizer PowerGel
Spot on desensitization.

With the control of a gel and confidence of **GLUMA**, your patients will appreciate the fast, effective, and long-term results for a more comfortable prophyl.

- Gel consistency for greater control and accuracy during placement.
- No-drip formula, so it stays where you place it.
- Green color indication for easy visual placement and rinse-clean capability.



Billable to Insurance!



Gluma Desensitizer Powergel	
Gluma Desensitizer PowerGel Syringe Kit (4 x 1 gm)	66043451
Gluma Desensitizer PowerGel Brush Cannulas	66044334

Whitening Solutions

Venus White® Max
Maximum whitening in a flash.

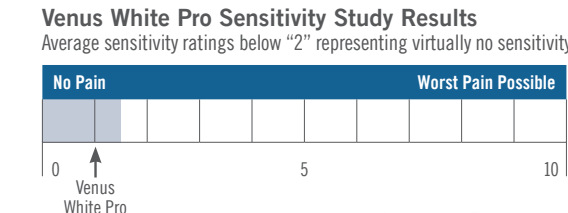
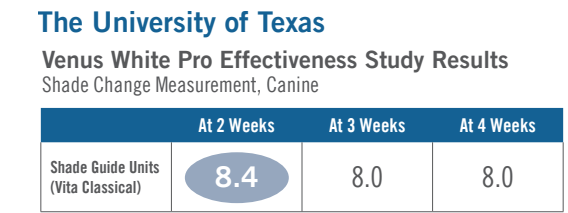
- Remarkably efficient—accelerate patients’ whitening with results in an hour or less.
- Three or four 15-minute treatments with 38% hydrogen peroxide gel.
 - Syringe-to-syringe mixing chemically activates the product, ensures a thorough mix and provides maximum freshness.
 - Contains potassium nitrate which helps decrease sensitivity associated with bleaching.



Venus White Max	
Venus White Max In-Office Kit (2 x 0.96 ml 38%Hydrogen Peroxide, 2 x 0.24 ml Activator, 1 x 1.2 ml Gingival Barrier, 2 x 20 ga Black Mini Tips)	40005211
Venus White Max Light Cure Gingival Barrier (4 x 1.2 ml Syringes, 8 Black Mini Tips)	40005202

Venus White® Pro
Custom whitening for exceptional impact.

- High-performance whitening for custom trays take a patient’s smile up to 8.4 shades whiter.*
- Choose from 16%, 22% or 35% carbamide peroxide strengths.
 - Contains potassium nitrate which helps decrease sensitivity associated with bleaching.
 - Mint flavored for patient comfort.



Venus White Pro		
16% Patient Kit (6 x 1.2 ml Syringes, Tray Case, Shade Guide)		40005166
22% Patient Kit (6 x 1.2 ml Syringes, Tray Case, Shade Guide)		40005167
35% Patient Kit (6 x 1.2 ml Syringes, Tray Case, Shade Guide)		40005460
16% Refill Kit (3 x 1.2 ml Syringes)		40005164
22% Refill Kit (3 x 1.2 ml Syringes)		40005165
35% Refill Kit (3 x 1.2 ml Syringes)		40005462
16% 50-Syringe Pack (50 x 1.2 ml Syringes)		40005463
22% 50-Syringe Pack (50 x 1.2 ml Syringes)		40005464
35% 50-Syringe Pack (50 x 1.2 ml Syringes)		40005465
EVA Sheets (25 Sheets x 0.040” thick)		40005203

*Results may vary.

Whitening Solutions

Venus White® Ultra and Venus White® Ultra+
A smart solution for you and your patients.

- Easy and convenient entry-level whitening provides unique business opportunities and opens doors to more advanced options.
- Once-a-day treatment for up to seven days.
 - Visibly whiter teeth in just three days.
 - Contains Potassium Nitrate for greater comfort
 - Each disposable tray is pre-filled with mint-flavored, 11.2% or 15% hydrogen peroxide gel.



Venus White Ultra	
Venus White Ultra (7 Upper and 7 Lower Pre-filled Trays - 11.2%)	40005210
Venus White Ultra+ (7 Upper and 7 Lower Pre-filled Trays - 15%) <i>*Available in US Only</i>	66060672

These products are not available in Canada.

Direct Restorative

Venus® ONE Pearl and Diamond
One shade for all.

- Venus Diamond/Venus Pearl ONE Shade** blends seamlessly into the surrounding dentition, independent of the tooth shade, enabling restorations to simply disappear. The universal composites for everyday restorations offer a new one-shade solution within the Venus family for the majority of everyday cases.
- Non-slump qualities for easy carving and sculpting
 - Stable, minimally adhesive, with an extended working time
 - Choose your preferred consistency



Venus Pearl ONE Shade	
Venus Pearl Syringe Refill ONE (1 x 3 g)	66081836
Venus Pearl PLT Refill ONE (20 x 0.2 g)	66081837
Venus Pearl ONE Kit – Syringe (2 x 3 g Syringes of Venus Pearl in shade ONE / 1 x 4 ml bottle of iBOND Universal)	66081840
Venus Pearl ONE Kit – PLT (30 x 0.2 g PLT of Venus Pearl in shade ONE / 1 x 4 ml bottle of iBOND Universal)	66081841
Venus Diamond ONE Shade	
Venus Diamond Syringe Refill ONE (1 x 4 g)	66081838
Venus Diamond PLT Refill ONE (20 x 0.25 g)	66081839
Venus Diamond ONE Kit – Syringe (2 x 4 g Syringes of Venus Diamond in shade ONE / 1 x 4 ml bottle of iBOND Universal)	66081842
Venus Diamond ONE Kit – PLT (30 x 0.2 g PLT of Venus Diamond in shade ONE / 1 x 4 ml bottle of iBOND Universal)	66081843

Direct Restorative

Venus Diamond®
Blending elegance
and efficiency.

Venus Diamond leads the industry in color adaptability, with a patented formula that provides an outstanding natural look. Just one shade saves time and produces radiant results. Along with superb color esthetics, this revolutionary nano-hybrid composite exhibits exceptional durability, handling and minimal shrinkage.

- Revolutionary nano-hybrid that enables perfect color adaptation, ease of polish and long lasting shine.
- Provides high durability with minimal shrinkage.
- Extended working time for efficient sculpting.



Venus Diamond									
Venus Diamond PLT Basic Kit (10 x 0.25 gm of the shades: A2, HKA2.5, A3, OLC, OMC, CL; 1 x 2 ml bottle of iBOND® Total Etch, Venus Diamond Layering Guide, Pictorial Card)	66055476	Shades	Syringe 1 x 4 gm	PLT 20 x 0.25 gm	PLT 10 x 0.25 gm	Shades	Syringe 1 x 4 gm	PLT 20 x 0.25 gm	PLT 10 x 0.25 gm
		A1	66035471	66039008		D3	66035483		66039020
		A2	66035472	66039009		OLC (Opaque Light Chromatic)	66046735		66046731
		HKA2.5	66035473	66039010		OMC (Opaque Medium Chromatic)	66046736		66046732
Venus Diamond Syringe Basic Kit (1 x 4 gm syringe each of the shades: A2, HKA2.5, A3, OLC, OMC, CL; 1 x 2 ml bottle of iBOND® Total Etch, Venus Diamond Layering Guide, Pictorial Card)	66055475	A3	66035474	66039011		ODC (Opaque Dark Chromatic)	66046737		66046733
		A3.5	66035475	66039012		OXDC (Opaque Extra Dark Chromatic)	66046738		66046734
		A4	66035476		66039013	BL (Bleach)	66035487		66039025
		HKA5	66035477		66039014	BXL (Bleach Extra Light)	66035488		66039026
		B1	66035478	66039015		OB (Opaque Bleach)	66035489		66039024
		B2	66035479	66039016		CL (Clear)	66035490		66039027
		B3	66035480		66039017	AM (Amber)	66035491		66039028
		C2	66035481	66039018		CO (Clear Opal)	66035492		66039029
		C3	66035482		66039019	YO (Yellow Opal)	66035493		66039030

Direct Restorative

Venus® Pearl
Beauty beyond esthetics.

Venus Pearl is a universal nano-hybrid composite based on the innovative urethane monomer chemistry of Venus Diamond. Venus Pearl offers the same combination of low shrinkage stress and high durability—in a creamy consistency.

- Well suited for anterior and posterior restorations.
- Exceptional sculptability and high degree of polishability.
- Ideal for fine detailed work.
- BISGMA and BPA free.



Venus Pearl							
Venus Pearl Syringe Basic Kit 1 x 3 gm syringe each of the shades A1, A2, HKA2.5, A3, A3.5, A4; 1 x 3 gm syringe of Venus Diamond Flow; 1 x 2 ml bottle of iBOND® Universal; Venus Pearl Layering Guide; Pictorial Card	66065932	Shades	Syringe 3 gm	PLT 20 x 0.2 gm	Shades	Syringe 3 gm	PLT 10 x 0.2 gm
		A1	66048175	66048090	OLC (Opaque Light Chromatic)	66048189	66048164
		A2	66048176	66048141	OMC (Opaque Medium Chromatic)	66048190	66048165
		HKA2.5	66048177	66048142	ODC (Opaque Dark Chromatic)	66048191	66048093
Venus Pearl PLT Basic Kit 10 x 0.2 gm PLT each of the shades A1, A2, HKA2.5, A3, A3.5, A4; 1 x 3 gm syringe of Venus Diamond Flow; 1 x 2 ml bottle of iBOND® Universal; Venus Pearl Layering Guide; Pictorial Card	66065931	A3	66048178	66048143	OXDC (Opaque Extra Dark Chromatic)	66048192	66048094
		A3.5	66048179	66048144	BL (Bleach)	66048193	66048096
		A4	66048180	66048145	BXL (Bleach Extra Light)	66048194	66048097
		HKA5	66048181	66048146	OB (Opaque Bleach)	66048195	66048095
		B1	66048182	66048147	CL (Clear)	66048196	66048098
Venus Pearl PLT Masters Kit 10 x 0.2 gm PLT each of the shades A1, A2, HKA2.5, A3, A3.5, A4, 5 x 0.2 gm PLT each of the shades HKA5, B1, B2, B3, C1, C2, C3, D3, CL, AM, CO, YO, OLC, OMC, ODC, OXDC, BL, BXL, OB, GUM, 5 x 0.3 gm PLT of the shade CORE; 2 x 1.8 gm Venus Diamond Flow Syringe Baseline; Venus Family Shade Guide; Venus Pearl Layering Guide; Pictorial Card	66048214	B2	66048183	66048148	AM (Amber)	66048197	66048099
		B3	66048184	66048149	CO (Clear Opal)	66048198	66048100
		C1	66048185	66048150	YO (Yellow Opal)	66048199	66048171
		C2	66048186	66048161	CORE	66048200	66048172*
		C3	66048187	66048162	GUM	66048201	66048173
		D3	66048188	66048163	*CORE shade PLT refill sold as 10 x 0.3 gm PLTs		

Direct Restorative

Venus® Bulk Fill

Faster, esthetic posterior restorations. Simplified.

Venus Bulk Fill is an advanced low stress posterior restorative solution that provides dentists with a faster, easier technique than incremental layering. Used in a base liner or a bulk fill technique, the result is a reduction in chair time and a more efficient and cost effective restoration. Self adaptive handling eliminates steps and provides ideal coverage of cavity floor and walls.

- Long working time for when you need it.
- Highly radiopaque for more accurate diagnosis.
- Available in Syringes and PLTs (pre-loaded tips).

Venus Bulk Fill	
Venus Bulk Fill Syringe Intro Kit (Self Etch)	66046793
Venus Bulk Fill Syringe Intro Kit (Total Etch)	66046794
Venus Bulk Fill Syringe Pediatric Kit + iBOND Self Etch	66057342
Venus Bulk Fill PLT Refill (10 x 0.2 gm PLT's)	66044743
Venus Bulk Fill Syringe Refill (1 x 1.8 gm Syringe – universal shade)	66046795



Venus Bulk Fill Specifications

Curing Depth (blue light: 600 mWcm²; 20 sec)	6.2 mm
Shrinkage Stress (@24h)	3.4 MPa
Compressive Strength	331 MPa
Flexural Strength	120 MPa
Radiopacity	300%-AI
3 Body Wear Resistance: (ATCA method, poppy seed, 300,000 cycl.)	32 µm .31 mm
Working Time: (ambient light, 8klux)	80 seconds
Conversion Rate (blue light: 600 mWcm²; 20 sec)	55%
Reflection after Polishing with Venus Supra (20/40 sec)	7.5%

Source: Kulzer R&D, Wehrheim, Germany Unpublished data. Data on file.

Direct Restorative

Venus Diamond® Flow

Seeing is believing.

Venus Diamond Flow is a nanotechnology based flowable composite that offers high radiopacity, low shrinkage and high flexural strength.

- Thixotropic handling behavior for easy control.
- Ideal as a base or liner.



Venus Diamond Flow

Venus Diamond Flow Syringe Assortment 1 x 1.8 gm syringe each of shades A1, A2, A3, and Baseline					66040353
Venus Diamond Flow PLT Assortment 10 x 0.2 gm each of shades A1, A2, A3, and Baseline					66040367
Shades	Syringe 1.8 gm	PLT 20 x 0.25 gm	Shades	Syringe 1.8 gm	PLT 20 x 0.25 gm
A1	66040354	66040368	HKA5	66040361	66040374
A2	66040355	66040369	B2	66040362	66040375
HKA2.5	66040357	66040370	OM (Opaque Medium)	66040363	66040376
A3	66040358	66040371	CL(Clear)	66040364	66040377
A3.5	66040359	66040372	BXL (Bleach Extra Light)	66040365	66040378
A4	66040360	66040373	Baseline	66041052	66041051



Charisma® ABC

Economic simplicity.

Charisma ABC is a new hybrid composite that allows natural restorations with minimal effort. Its shade selection, creamy consistency and easy polishing make Charisma ABC your go-to composite for every restoration. Enjoy the following benefits with your simple yet trusted restorative solution from Kulzer:

- Easy application.
- A brand you can trust.
- Savings you can count on.



Charisma ABC		
Shades	Syringe 1 x 4 gm	PLT 20 x 0.2 gm
A1	66064772	66064780
A2	66064773	66064791
A3	66064774	66064792
A3.5	66064775	66064793
A4	66064776	66064794
B2	66064777	66064795
C2	66064778	66064796
Opaque	66064779	66064797

Direct Restorative

Venus® Supra
Long-lasting, high gloss polishers.

Use **Venus Supra** for polishing all types of composites—in just two steps—to achieve long-lasting, high gloss polishing effects for naturally beautiful composite restorations. Additionally, Venus Supra polishers achieve extremely low surface roughness, reducing plaque accumulation and pigmentation over time.

- Silicone polishers highly filled with microfine diamond powder.
- Available in 5 different shapes: Cup, Disk, Flame, Large Cup, Large Flame.
- Autoclavable and latex-free.



Venus Supra		
Venus Supra Intro Kit (5 Pre + 5 Gloss Polishers)		66087541
Twist Polishers (10 pack)		
Venus Supra Refill Pre Twist Disc		66093899
Venus Supra Refill Gloss Twist Disc		66093900
Venus Supra Refill Pre Twist Brush		66093901
Venus Supra Refill Gloss Twist Brush		66093902
Refills (10 pack)		
Venus Supra Refill Pre Cup (10 polishers: One shape as pre-polishers)		66033893
Venus Supra Refill Gloss Cup (10 polishers: One shape as gloss polishers)		66093894
Venus Supra Refill Pre Flame (10 polishers: One shape as pre-polishers)		66093895
Venus Supra Refill Gloss Flame (10 polishers: One shape as gloss polishers)		66093896
Venus Supra Refill Pre Large Flame (10 polishers: One shape as pre-polishers)		66093897
Venus Supra Refill Gloss Large Flame (10 polishers: One shape as gloss polishers)		66093898

Translux® Wave
Power and speed—at your fingertips.

The **Translux Wave** is a state-of-the-art curing light that delivers optimum polymerization for all common camphorquinone based dental materials. Its lightweight, cordless and ergonomic design provides a safe and easy method for consistent light-curing.



Translux Wave		
Translux Wave Curing Light (Handpiece, 8 mm light guide, glare shield, charging unit, power supply, IFU)		66055012
Translux Wave Light Guide, 8 mm, 70°		66057365
Translux Wave Orange Glare Shield		66016455
Translux Wave Li-ion Rechargeable Battery		66057363

Direct Restorative

iBOND® Universal
Every surface. Every indication.
Every technique.

iBOND Universal is the universal, light-curing adhesive for any bonding technique, all indications and is compatible with all dental materials.

- Durable, reliable bond strength.
- For use with all dental materials and all indications.
- No need for a dual cure activator.
- Reduced technique sensitivity.
- Your preferred bonding technique.



iBOND Universal		
iBOND Universal Bottle Intro Kit		66061413
iBOND Universal Bottle Refill 1 x 4 ml		66061411
iBOND Universal Bottle Value Pack 3 x 4 ml		66061412
iBOND Universal Single Dose Value Pack		66061419
iBOND Ceramic Primer 1 x 4 ml		66061416

iBOND® Total Etch
Consistent reliability.

iBOND Total Etch is an etch and rinse 2-step adhesive that attains high bond strength to both enamel and dentin while ensuring optimal marginal sealing. It is also ideal for desensitizing hypersensitive areas.

- Clinically proven to provide reliable and consistent bond strength.
- Optimized with nano-filler for improved intrinsic strength.



iBOND Total Etch		
iBOND Total Etch Bottle Refill (1 x 4 ml Bottle, 50 Application Tips, IFU and Pictorial Card)		66040094
iBOND Total Etch Bottle Value Pack (3 x 4 ml Bottles, IFU and Pictorial Card)		66039867
iBOND Total Etch Single Dose Refill (50 Single Doses, 50 Application Tips, IFU and Pictorial Card)		66040093
iBOND Total Etch Single Dose Value Pack (100 Single Doses, 100 Application Tips, IFU and Pictorial Card)		66039870
iBOND Total Etch Bottle Assortment (1 x 4 ml Bottle, 2 x 2.5 ml iBOND Etch 35. Gel Syringes, 50 Application Tips, Mixing Wells and 25 Cannulas)		66039866

Indirect Restorative

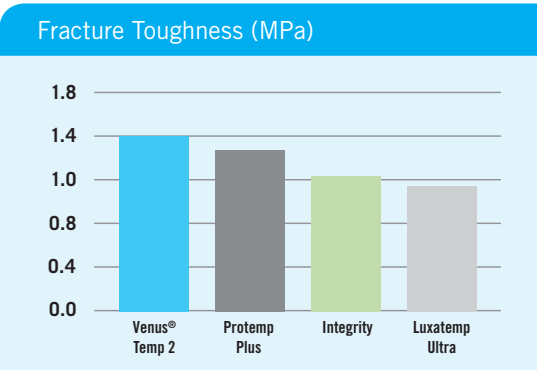
Venus® Temp 2

For seamless transitions.

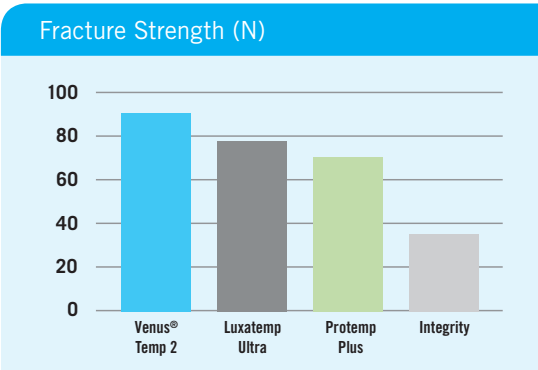
- A unique formula that provides the ideal combination of strength, hardness and flexibility, **Venus Temp 2** offers a perfect temporary restoration that will satisfy both dental professionals and their patients.
- Nano-particle formula for a brilliant, esthetic high gloss finish.
 - Exceptional wear resistance and flexural strength.
 - Optimal flowability for easy handling and application.

Venus Temp 2	
Shades	50 ml Cartridge & 12 Mixing Tips
A1	66049181
A2	66049182
A3.5	66049183
B1	66049184
Bleach	66049185
Accessories	
Dispensing Gun 10:1	66036083
Mixing Tips Refill (50)	66036082

Venus Temp 2 is not available in Canada.



In a study with Tufts University, Venus Temp 2 was proven to excel when compared against the leading competitors in both Fracture Toughness and Flexural Strength. *Source: Tufts University of Dental Medicine.*



Indirect Restorative

Flexitime® VPS

The perfect fit. Every time.

- Flexitime** combines over ten years of market experience with the outstanding performance and features of a precision impression material.
- Reliable impressions even in adverse conditions.
 - Exceptional toughness prevents tearing and distortion.
 - *Advanced ThermoSense Technology:* Flexitime's unique chemistry reacts to the warmer temperatures in a patient's mouth, allowing for variable working times.



Flexitime VPS Impression Material	
Easy Putty (1 x 600 ml)	50034802
Heavy Tray (1 x 2 x 50 ml Cartridges with Mix Tips)	50034804
Monophase (1 x 2 x 50 ml Cartridges with Mix Tips)	50034811
Medium Flow (1 x 2 x 50 ml Cartridges with Mix Tips)	40005041
Correct Flow (1 x 2 x 50 ml Cartridges with Mix Tips)	50034806
Light Flow (1 x 2 x 50 ml Cartridges with Mix Tips)	40005040
Accessories	
Mix Tips 4.2mm Yellow (48 Count)	66001988
Mix Tips 6.5mm Green (48 Count)	66001989
Intraoral Tips, Yellow (96 Count)	66000782
Intraoral Tips, Clear (96 Count)	65687514
Universal Silicone Adhesive (10 ml)	65607758
Dispensing Gun 2 (2:1/1:1)	66001970

Flexitime Dynamix	
Flexitime Dynamix speed Automatic Mixing Machine	66045802
Flexitime Dynamix Heavy Tray Refill (2 x 380 ml)	40003991
Flexitime Dynamix Monophase Refill (2 x 380 ml)	40003990
Flexitime Dynamix Putty Refill (2 x 380 ml)	40003992
Accessories	
Dynamix Mixing Tips (1 x 50)	40004353
Dynamix Fixation Ring (1 x 2)	66047385

Flexitime® Dynamix® speed

Automatic Mixing Machine

The perfect mix. Every time.

- Dynamix speed** offers all of the advantages of automatic mixing, and most importantly, it saves the practice time.
- Void free mixing ensures precision and accuracy.

Indirect Restorative

Flexitime® Xtreme 2
Fast and flexible.

Achieve efficiency with a 30- to 90 - second working time, perfectly suited for more common single unit impressions.

- Enhanced physical properties for increased hydrophilicity, improved tear strength and greater toughness.
- Save time with a short intraoral set time of 90 seconds.
- Advanced thermasense technology that allows for variable working times.



Flexitime Xtreme 2 Fast Set	
Flexitime Xtreme 2 Heavy Tray Bulk (12 x 50 ml Heavy Tray cartridges, 36 mix tips)	66044884
Flexitime Xtreme 2 Heavy Tray Refill (6 x 50 ml Heavy Tray cartridges, 18 mix tips)	66044885
Flexitime Xtreme 2 Trial Kit (4 Heavy Tray 50 ml cartridges, 2 Correct Flow 50 ml cartridges, 18 mixing tips, and 12 intraoral tips)	66044893
Flexitime Xtreme 2 Correct Flow Refill (6 x 50 ml Correct Flow cartridges, 18 mix tips)	66050334
Flexitime Xtreme 2 Correct Flow Bulk (12 x 50 ml Correct Flow cartridges, 36 mix tips)	66050335
Flexitime Xtreme 2 Dynamix Heavy Tray (2 x 380 ml Heavy Tray Dynamix machine cartridges)	66065537

Flexitime® Fast & Scan
Digitize your traditional impression material process.

Flexitime Fast & Scan supports CAD/CAM manufacturing of prosthetic restorations and offers optimal workflow integration for all your impression needs and their digitization.

- Flexible working time of 0:30 to 1:30 minutes, short intraoral setting time of only 2:00 minutes.
- Powder-free and direct scanning of material.



Scannable without powder!

Flexitime Fast & Scan	
Flexitime Fast & Scan Heavy Tray (2 x 50 ml)	66060792
Flexitime Fast & Scan Light Flow (2 x 50 ml)	66044871
Flexitime Fast & Scan Medium Flow (2 x 50 ml)	66044881
Flexitime Fast & Scan Easy Putty (1 x 600 ml)	66045754
Flexitime Fast & Scan Dynamix Heavy Tray (2 x 380 ml)	66045755
Flexitime Fast & Scan Dynamix Putty (2 x 380 ml)	66044882
Flexitime Dynamix Monophase ProScan (2 x 380 ml)	66045801
Flexitime Dynamix Monophase ProScan Trial Kit	66049132



Flexitime® Bite
The foundation for accurate results.

Flexitime Bite delivers exceptional accuracy for standard bite registrations and superior powder-free scannability and optimization.

- Sets fast in just 30 seconds.
- Extremely high shore D hardness of 40.
- Whipped cream-like consistency ensures exceptional accuracy.



Flexitime Bite	
Flexitime Bite Bulk (3 x 2 x 50 ml cartridges and 18 mix tips)	66038751
Flexitime Bite Refill (2 x 50 ml cartridges and 6 mix tips)	50066038

Indirect Restorative

Xantasil® Alginate Substitute
The smart alternative to alginate.

Specifically designed for the requirements of anatomical impressions and features long-term dimensional stability, void-free mix quality, hygienic processing, easy disinfection, optimized gypsum pouring behavior and easy handling at every step in the process.

Anatomical impressions such as:

- Impressions for temporaries
- Orthodontic models
- Opposing jaw models
- Splints
- Whitening trays

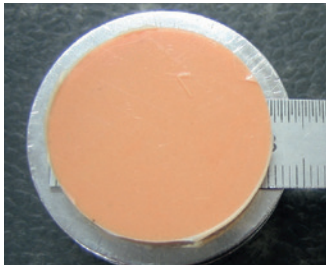
Xantasil Fast Set	
Xantasil Dynamix Refill (2 x 380 ml)	66052101
Xantasil Cartridge Refill Fast Set (6 x 50 ml)	66052102
Xantasil FS Cartridge Bulk Pack (50 x 50 ml)	66067514



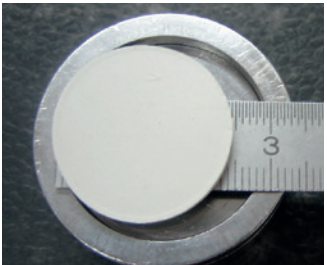
Impressive dimensional stability



Reference form with ruler.



xantasil® shrinkage behavior after several weeks.



Leading alginate competitor shrinkage behavior after 24 hours.

Source: Kulzer R&D. Storage conditions in accordance with ISO 4823. Data available.

Product	Mixing time (sec)	Working time (mins)	Time in mouth (mins)	Deformation under pressure (%)	Shore A hardness
xantasil Dynamix Fast Set	auto	01:00	01:30	5	50
xantasil Cartridge Fast Set	auto	01:00	01:30	7	45

Modeling Solutions

Modern Materials® Gypsum

The modern force. Powered by natural resources.

Modern Materials is high-grade gypsum, a naturally-occurring mineral known for centuries for its ability to bind thoroughly.

- We build quality, performance and value into all Modern Materials gypsum products, which means you get consistent results every time.
- We use only the finest raw materials.
- We maintain rigid manufacturing standards to ensure finished products with reliable consistency in every batch.

Die Stones		
Die-Keen®		
Die-Keen Green 25 lb. Carton		50046578
Die-Keen Pink 25 lb. Carton		50046560
Die-Keen Blue 25 lb. Carton		50046565
Die-Keen Ivory 25 lb. Carton		50046615
Die-Keen Green 45 lb. Carton		50046580
Die-Keen Pink 45 lb. Carton		50046590
Die-Keen Blue 45 lb. Carton		50046585
Die-Keen Ivory 45 lb. Carton		50046635
Die-Keen Green Box 60 gm Pouches		50046502
Die-Keen Green Box 120 gm Pouches		50046507
Die-Keen® Resin Reinforced		
Die-Keen Resin Reinforced 25 lb. Blue		50046750
Die-Keen Resin Reinforced 25 lb. Lt. Buff		50046950
Die-Stone®		
Die-Stone Peach 25 lb. Carton		50046674
Die-Stone Peach 45 lb. Carton		50046675

Model Stones		
Denstone®		
Denstone Golden 25 lb. Carton		50046175
Denstone White 25 lb. Carton		50046172
Denstone Golden 45 lb. Carton		50046185
Denstone Pink 45 lb. Carton		50046183
Denstone White 45 lb. Carton		50046182
StatStone®		
StatStone 25 lb. Carton		50046860
StatStone Box (24 each) 120 gm Pouches		50046865
0-67® Snow White Orthodontic Stone		
0-67 25 lb. Carton		50046972
0-67 50 lb. Carton		50046952
Labstone®		
Labstone Buff 25 lb. Carton		50046277
Labstone Blue 25 lb. Carton		50046279
Labstone Buff 45 lb. Carton		50046287
Labstone Blue 45 lb. Carton		50046289
Labstone Green 45 lb. Carton		50046288
Labstone Buff Fast Set 45 lb. Carton		50046265
Modern Flow®		
Modern Flow 25 lb. Carton		66066834
Modern Flow 45 lb. Carton		66066833

Plasters				
Orthodontic Plaster				
Ortho 25 lb. Carton				50048170
Ortho 45 lb. Carton				50048180
Lab Plaster				
Lab Plaster Reg Set (6–8 min.) 25 lb. Carton				50048472
Lab Plaster Fast Set (4–6 min.) 25 lb. Carton				50048512
Lab Plaster Reg Set (6–8 min.) 45 lb. Carton				50048452
Lab Plaster Fast Set (4–6 min.) 45 lb. Carton				50048552
Pumice				
Pumice	8 lb. Tub	10 lb. Tub	45 lb. Carton	
Pumice, Flour		50049140	50049150	
Pumice, Fine – “FF” Grit		50049240	50049250	
Pumice, Medium – “F” Grit		50049340	50049350	
Pumice, Coarse – “O-1/2” Grit	50049440		50049450	
Pumice, X-Coarse – “1/2” Grit			50049550	

Modeling Solutions

Modern Materials® Wax

The standard in quality, versatility, consistency and reliability.

- Made from beeswax and organic waxes collected from trees in South America.
- Created with a higher percentage of organic waxes which allows for the wax to boil out cleanly.
- Highly controlled facilities providing consistent results.



Base Plate Waxes		
Shur Wax® Pink		
1 lb. Box		50093112
5 lb. Box		50093152
Shur Wax® X-Hard Pink		
1 lb. Box		50093212
5 lb. Box		50093252
Modern Pink No. 3		
1 lb. Box		50093312
5 lb. Box		50093352
Thin-Ex Wax .040 Gauge Pink		
1 lb. Box		50093712

Utility Strips & Square Ropes		
Utility Wax Strips		
Large (75 Strips Red)		50094193
Large (75 Strips White)		50094191
Small (114 Strips Red)		50094293
Small (114 Strips White)		50094291
Utility Wax Square Ropes		
Box (55 Ropes Red)		50094493
Box (55 Ropes White)		50094491
Box (286 Ropes Red)		50094593
Box (286 Ropes White)		50094591
Boxing Wax		
“Regular” Red 1 lb. Box		50094693
“X-thin” Red 1 lb. Box		50094793
Yellow Bite Wax		
1 lb. Box		50093614
5 lb. Box		50093654

Bite Blocks Pink		
Trial Package (12 Blocks Hard)		50095492
Trial Package (12 Blocks Soft)		50095592
Laboratory Package (120 Blocks Hard)		50095892
Laboratory Package (120 Blocks Soft)		50095992
Check Bite Wafers		
Trial Package (48 Wafers)		50095094
Economy Package (192 Wafers)		50095194
Surgident® Coprwax™		
Box of 84 Per Package		50092178
Surgident® Periphery Wax		
Box of 60 Sticks		50092189

Digital Solutions

cara® Print 4.0 pro

Quick, precise, & economical 3D printing.

cara Print 4.0 pro is a 3D printer developed by dental experts to be part of a comprehensive, thoroughly tested workflow. It offers dental technicians a faster, more economical method of producing polymer-based dental appliances in-house.

- Quickly creates polymer-based dental appliances in-house
- Produces smooth surfaces with no visible layers
- 385 nm wavelength LEDs for greater stability
- Competitively priced

dima® Print Materials

Fine-tuned 3D printing resins.

Kulzer combined its longstanding materials expertise with deep knowledge of 3D printing to create **dima Print** materials. All materials are based on decades of research – including those specifically designed for the modern digital workflow.

dima Print materials are light-curing monomeric liquids specially optimized for 3D printing and the requirements of dental applications. When used together with your cara Printer and post-curing unit, technicians benefit from a comprehensive 3D-printing system designed for speed, reliability and value.



Printer and accessories	
cara Print 4.0 pro	66095525
cara Print LEDcure	66078521
cara Print 4.0 pro Print Tray	66094904
cara Print 4.0 pro Build Table	66094903
dima Print materials (1000 gm bottles)	
dima Print Cast Ruby 1000g	66081664
dima Print Stone (beige)	66077913
dima Print Stone (teal)	66081650
dima Print Stone (gray) - Ceramicists models	66080023
dima Print Guide (transparent light orange)	66069099
dima Print Impression (blue)	66069098
dima Print Gingiva Mask	66077884
dima Print Splint Clear (transparent)	66077916
dima Print Denture Base Try-in (White)	66081666
dima Print Denture Base Light Reddish Pink	66081670
dima Print Denture Base Light pink	66081671
dima Print Denture Base Original pink	66081672
dima Print Denture Base Dark pink	66081673
dima Print Denture Teeth - A1	66081674
dima Print Denture Teeth - A2	66081675
dima Print Denture Teeth - A3	66081676
dima Print Denture Teeth - A3.5	66081677
dima Print Denture Teeth - B1	66081678
dima Print Denture Teeth - B2	66081679
dima Print Denture Teeth - BL1	66087415
dima Print C&B Temp - A1	66087416
dima Print C&B Temp - A2	66087417
dima Print C&B Temp - A3	66087418
dima Print C&B Temp - A3.5	66087419
dima Print C&B Temp - B1	66087420
dima Print C&B Temp - B2	66087421
dima Print C&B Temp - BL1	66087423

Digital Solutions

cara® Print LEDcure

Post-curing for 3D printed materials.

cara Print LEDcure creates a stable thermal environment to ensure complete bond formation and to prevent restorations from coming out sticky. This curing device fits up to five models in its large chamber and gives you control over the time, temperature, and LED-intensity settings.

- Transparent turntable and fan-assisted heater ensure homogenous results with no need to flip objects
- Includes preset illumination programs for **dima Print Materials**
- 1-year warranty included



cara® Print Clean pro

Automated cleaning for 3D printed materials.

Automate your entire 3D printing process with this hands-free and efficient wash unit. Put printed parts directly into **cara Print Clean pro** where agitated isopropanol removes excess uncured resin.

- Uses less isopropanol to save money and minimize exposure
- One-touch button operation to streamline your process
- Cleans in just 5 minutes

*Be sure to complete two separate cleanings: First wash in Isopropanol for 3 mins, then wash in fresh Isopropanol for 2 minutes, either using a second cara Print Clean Pro wash unit or a second set of containers.



cara Print Clean Pro	
cara Print Clean pro	66093940
cara Print Clean pro Containers	66087542
cara Print Clean inner container upgrade kit	66087543

Pala® Digital Dentures

Revolutionizing the denture process.

- The only solution with CAD/CAM designed and manufactured teeth, for extremely accurate dentures.
- The fastest denture option for patients: just 10 days, start to finish!
- Precision fit and comfort means more satisfied customers.
- **For dentists**, precision dentures are ready in just 3 visits, so you can see more patients and increase efficiency. And, the digital process makes duplicate dentures quick and easy—no chair time required.
- **For dental labs**, rapid startup and full Kulzer support makes it easy to enter the denture market. Cut expenses, achieve higher throughput, and grow profits by streamlining your laboratory's approach with process automation.



A Pala Digital Denture Tray Refills	
Pala Digital Denture Tray Refills Kit (1 of each tray and 4 Pala tracers)	66061901
Bulk Tray Refill Packs	
Pala Digital Denture Tray Small - Bulk pack of 10	66064302
Pala Digital Denture Tray Medium - Bulk pack of 10	66064303
Pala Digital Denture Tray Large - Bulk pack of 10	66064304
Pala Digital Denture Tray XLarge - Bulk pack of 10	66064305

B Pala Digital Denture Tracer	
Pala Digital Denture Tracer (Set of 10)	66061905

C Pala Digital Denture Single Arch Attachment	
Pala Digital Denture Single Arch Attachment Set (S/M & L/XL)	66061904

Work Better with Kulzer Workflows

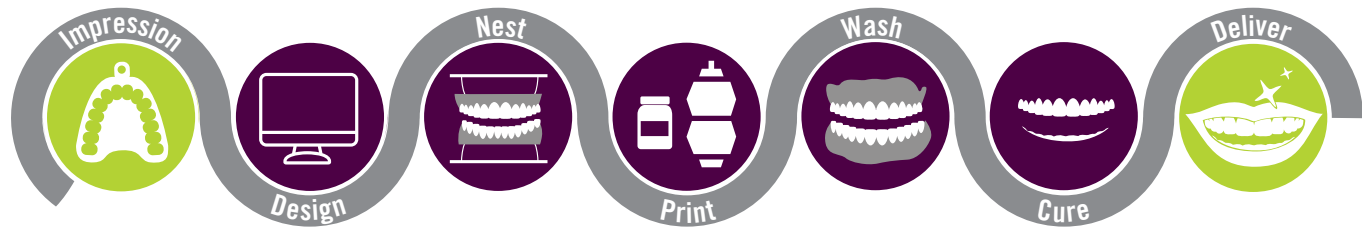
Save time and money and work with confidence by following a **Kulzer Workflow**.

These comprehensive Workflows are detailed and tested processes that ensure consistent outcomes. Each step includes product recommendations and expert tips to help you achieve the best results.

Digital Restorative Workflow *for Dentists*

Streamline the restorative process saving you and your clients chair time. Fabricate restoratives of the highest quality and durability.

2 Steps for Dentists: Impression | Deliver



Analog Denture Workflow *for Dental Labs*

Boost production and streamline your team's analog denture fabrication process. This Workflow will teach your technicians how to get consistently beautiful results with every case.

5 Steps for Labs: Model & Impression Tray | Base Plate & Bite Blocks | Teeth Setup | Denture Processing | Denture Finishing



Direct Restorative Workflow *for Dentists*

Optimize your restorative process with the tips in this Workflow that will help you save chair time and place durable, esthetic composite restorations.

4 Steps: Tooth Isolation | Prep & Adhesive | Fill Direct Restorative | Finish & Polish



Denture Solutions

Pala® Mondial® & Mondial i®

High esthetics for the highest demands.

- **Mondial and Mondial i** denture teeth are made with the world's first and only dental acrylic—Flexecure®, a combination of unique microfillers and nanoparticles.
- Manufactured using CAD/CAM technology for precision and dimensional stability.
- Abrasion resistance comparable to composites.
- The perfect implant overdenture solution.
- 12 year warranty.

Pala Mondial & Mondial i – 50% better wear than conventional PMMA materials.



Delara®

The best of both performance and value.

- The heart of the Pala family of teeth, **Delara** teeth deliver the perfect blend of value and lifelike aesthetics. These versatile mid-class teeth are ideal for partial and full dental prostheses.
- Excellent price-to-performance ratio
 - 18 vibrant shades (VITA A1-D4 plus bleach shades BL2 & BL3)
 - Easy integration with CAD/CAM workflows
 - Easy setup and various tooth setup possibilities

Pala® Artic Digital

CAD/CAM teeth at an economical price.

- Artic Digital** teeth are specially designed to work with Kulzer's private processing economy digital dentures.
- Based on our most popular Artic moulds.
 - Manufactured using CAD/CAM technology for precision and dimensioning/stability.

Pala Denture Teeth	
Pala Denture Teeth	See sales representative or kulzerUS.com for item numbers.
Mondial & Mondial i Shade Guide	66040261
Delara Shade Guide	66077200
Artic Shade Guide	66055993

Pala® Artic

A revolution in beauty and performance.

- Artic's** multilayered structure allows exact matching of reflection curves in both natural and artificial teeth.
- Produced using the sophisticated INCOMP manufacturing process, resulting in teeth that possess very high density.
 - PMMA crosslinked material.

Denture Solutions

Pala® Polish

Achieve a high shine and remove scratches in one step.

- Simultaneously removes scratches and leaves a high shine on appliances.
- No need for pumice.
- Reduced polishing times.



Pala Polish	
Pala Polish Cream 80 gm	66067855

Pala® Lab Putty

Fast and precise. Two hardness options.

- Easy 1:1 mixing, no shrinkage.
- Highly reproducible detail.



Pala Lab Putty	
Lab Putty - Shore 90 Light blue 2 x 1.5 kg	66057432
Lab Putty - Shore 90 Light blue 2 x 5 kg	66057433
Lab Putty - Shore 65 Pink 2 x 1.3 kg	66057434
Lab Putty - Shore 65 Pink 2 x 4.5 kg	66057435

Pala® cre-active®

Light-curing colorfluid system.

- **Pala cre-active** is the light-curing colorfluid system for the characterization of dentures and the creation of a more natural, personalized appearance.
- Universally manageable.
- Various colors and consistencies available as a set or in refills.

Pala cre-active refills sold as 3 gm syringes.



Pala cre-active			
Pala cre-active (set) 12 x 3 gm Pala cre-active (white, polar, pink, red, maroon, black, gum, gingiva pink, gingiva shade 200, gingiva R50, gingiva light pink, gingiva clear) syringes 1 Pala cre-active Shade Guide 1 brush 20 cannulas (metal) 5 cannulas (plastic)	66033445	Pala cre-active Refill - white	66033447
		Pala cre-active Refill - polar	66033448
		Pala cre-active Refill - pink	66033449
		Pala cre-active Refill - red	66033450
		Pala cre-active Refill - maroon	66033461
		Pala cre-active Refill - black	66033462
		Pala cre-active Refill - gingiva pink	66033463
		Pala cre-active Refill - gingiva shade 200	66033464
		Pala cre-active Refill - gingiva R50	66033465
		Pala cre-active Refill - gingiva light pink	66033466
		Pala cre-active Refill - gingiva clear	66033467
		Pala cre-active Refill - gum	66033468

Signum® HiLite® Pre 2

Pre-polymerization lamp with mobile charging unit.

HiLite Pre 2 provides LED light technology with modern design for rapid and professional pre-polymerization* of flowable composites. Use for a wide variety of indications in the fields of acrylic prosthetics and veneering.

* For final polymerization, an additional device is required, e.g. Signum HiLite power or HiLite power 3D.



Signum HiLite Pre 2	
Signum HiLite Pre 2 curing unit	66059751

Denture Solutions

Palajet®
Denture innovation—evolved.

- Precision engineering for injection denture fabrication.
- Palajet dentures offer a superb fit, perfect occlusion and the ultimate in esthetics.
- For injection of heat-curing and cold-curing acrylics.

Palajet	
Palajet System (Palajet Injection Unit, Palamat elite, 1 kg of PalaXpress ultra w/ liquid, Palabond, Aislar and the accessories included with the Palajet injection unit)	50726601
Palajet Injection Unit (Mixing Bowl, Spatula, Multiple Injection Cylinder, Duoflask, Flask Carrier, PalaXpress Plastic insert, Sprue Wax and Dosing Cup)	66020450
Palajet Accessories	
Palajet Single Flask	64710524
Palajet Duoflask	64715798
Palajet Mixing Bowl	64708088
Palajet Multiple Injection Cylinder	64710527
Palajet Flask Carrier	64710526

Palamat Premium	
Palamat Premium pressure curing unit	66076558
Palamat flask tray with pins	66056911

Palamat Premium®
Smaller on the outside, smarter on the inside.

Bigger-on-the-inside, **Palamat Premium** is the water-bath pressure pot that’s perfect for nearly any polymerization task. Although designed to take up less space on the counter, **Palamat Premium** has an impressive interior capacity that can fit one large articulator or up to six dentures at one time.

- Exterior design protects display from water
- Display includes color-coded programs
- Temperature, pressure, and time are always visible
- 40–90°C temperature range



Denture Solutions

Palapress® vario
The classic cold-curing denture acrylic.

- **Palapress vario** is an injectable/pourable self-curing denture acrylic with extended processing time.
- Easy to use, especially in combination with the **Palajet** Injection Unit.
- Available in 6 shades.



Palapress vario	
Palapress vario Liquid (500 ml)	64707864
Palapress vario Powder (1 kg Shade Pink #1)	64707889
Palapress vario Powder (1 kg Shade 200 #8)	64712343
Palapress vario Powder (1 kg Shade Clear #7)	64707892
Palapress vario Powder (1 kg Shade Light Pink #11)	64714796
Palapress vario Powder (1 kg Shade Pink Veined #3)	64707891
Palapress vario Powder (1 kg Shade R50 Veined #4)	64707893

Paladon® 65
The legendary heat-curing denture base material.

- Its well-balanced properties make it economical to use and guarantee high quality dentures at reasonable prices.
- Low shrinkage.



Paladon 65	
Paladon 65 Liquid (500 ml)	64707674
Paladon 65 Powder (1 kg Shade Clear #7)	64707710
Paladon 65 Powder (1 kg Shade Pink #1)	64707706
Paladon 65 Powder (1 kg Shade Pink Veined #3)	64707708
Paladon 65 Powder (1 kg Shade R50 Veined #4)	64707711

Refining Solutions

Want to earn more for your scrap?
Kulzer Precious Metal Refining

Direct Refining for Higher Returns

No middleman. No hidden fees. No lowball scrap pile estimates.

Just a specialized in-house refining process and complete individualized assays to determine the precise value of each lot.

That's how Kulzer Precious Metal Refining guarantees you top dollar for your dental scrap.

Refine directly with Kulzer—the most trusted dental scrap refinery for the past 50 years—to enjoy the highest returns in the industry.

No middlemen. When you refine directly with Kulzer, you don't lose money in commissions to weigh-and-pay dealers who guesstimate the value of your scrap on the spot.

No hidden fees. Our prices are transparent so that you always know you're getting what your scrap is worth.

Scrap Refining	
Scrap Refining Folder Kit - US	40001148
Scrap Return Blue Box (Holds 5 lbs max)	50900007
Scrap Return Drumette (Holds 15 lbs max)	50900008
Scrap Return 15-Gallon Drum (Holds 150 lbs max)	50900009
Scrap Return 30-Gallon Large Drum (Holds 300 lbs max)	50900019

Note: Scrap refining containers are complimentary.

Get a
5% Bonus
from Kulzer

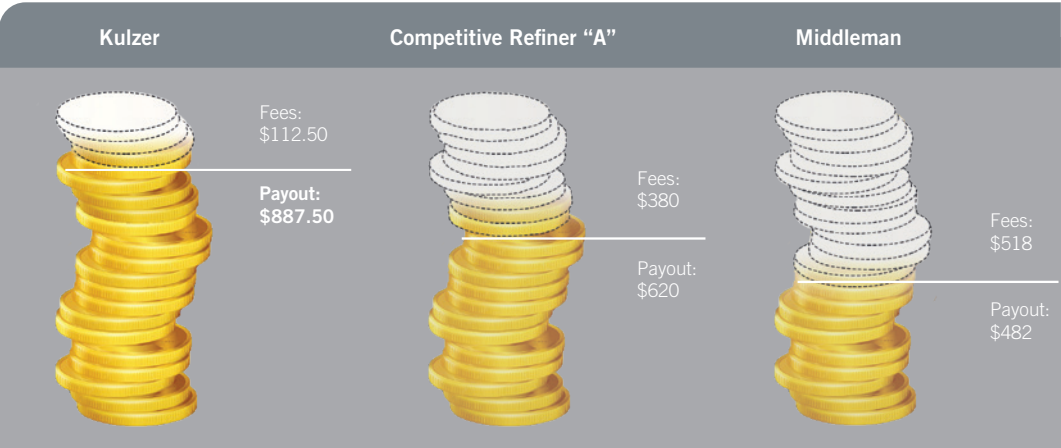
You may qualify for 5% extra on your next scrap lot. Ask your Kulzer Sales Specialist for more information.

Accurate technology-based assays. Kulzer Refining uses ICP-AES technology to precisely determine precious metal composition in each scrap lot.

Autoship option. The easiest way to get “free” money, our Autoship Program helps you regularly cash in on the precious metals hiding in your lab or practice.

Free shipping & containers. It costs you nothing to let us pick up your dental scrap.

Free assay report. Our valuations are 100% transparent. Get the full breakdown of the composition of your scrap to see how we calculated your payout.



*Assuming all quantities of precious metals are equal. Actual payout varies depending on the quantities of precious metals and value of London metal exchange when assayed.

Refining Solutions

“Kulzer [came] out on top every time. The difference was quite stunning. Kulzer returned anywhere from 11% to 16% more than the other companies.”
— Art Rocco DDS, Rocco's Dental Studio

“It's refreshing to find a company who cares this much about building a true win-win relationship with its customers.”
— Gerald Pontasch of Gnathodontics Dental Lab

“I always receive excellent personalized service with the highest level of integrity and consummate professionalism. Would use no other company for my scrap needs.”
— Leonard J. Mark, DDS





Know what matters.
Find what works

Your portal to professional success.

MyDental360 by Kulzer is an intuitively designed learning hub for progressive dental professionals. Packed with educational resources and innovative solutions, MyDental360 will streamline your day-to-day processes, equip you with the tools you need, and help you achieve superior outcomes.

- Webinars
- CE Credits
- Product Tutorials
- Timesaving Tips
- Convenient Online Ordering
- Complimentary Samples
- Guided Workflows

Start exploring MyDental360.com today and receive a complimentary product sample of your choice.

Learn & Grow with MyDental360



Distributed by:
Kulzer, LLC
4315 S. Lafayette Blvd.
South Bend, IN 46614
(800) 431-1785

Manufactured by:
Kulzer GmbH
Leipziger Straße 2
63450 Hanau, Germany
info.dent@kulzer-dental.com