



## Pala® Denture Solutions

Where artistry, science and technology come together.

Giving a hand to oral health.



**KULZER**  
MITSUI CHEMICALS GROUP

# Pala Denture Solutions

Where artistry, science and technology come together.

As a dental technician, you are an artist, a scientist, and an engineer.

Some artists use their skill to create detailed, beautiful masterpieces. Others use their art to invoke a feeling...confidence, happiness, power. As a dental technician, you achieve both. With every masterfully hand-crafted device you create, the person wearing your work can smile again... speak again... enjoy a meal again...with renewed confidence and improved quality of life.

In order to do your best work, the tools of your trade need to support all of your roles: as an artist with a sharp eye for detail, a master craftsman capable of the most intricate and delicate work, and a highly-skilled specialist utilizing advanced technologies.

When your lab is powered by Pala, you know that you have access to the industry's best resources and materials. You know that every Pala solution has been carefully designed to complement your skill set and save you time, without sacrificing quality or detail. And you know that all Pala products were imagined, created and perfected by people just like you...people with a passion for art, science, innovation and applying their knowledge to enhance the lives of patients around the world.

PREPARATION Pala Lab Putty



PROCESSING Palajet, Palamat



FABRICATION Pala Acrylics



FINISHING Pala Polish, Pala cre-active

For the most up-to-date product information, visit [kulzerus.com/pala](http://kulzerus.com/pala)



## Pala Denture Teeth

A long history of quality and collaboration with dental technicians.



### Mondial i

For the highest demands in aesthetics, function and natural appearance.

All the features of Mondial below, *plus*:

- Aesthetics: increased transparency, enhanced incisal edge, 3D multilayering for greater lifelike effect, larger volume, and broader neck—perfect for concealing **implant retained structures**
- Portfolio: Wide selection of true to nature moulds that **integrate seamlessly with Mondial** for maximum flexibility and individualization.

### Mondial

Natural beauty, strength and guaranteed precision.

- Aesthetics: Extremely lifelike optical properties such as opalescence, fluorescence and translucency with seamlessly blended 3D layering that mirror natural teeth.
- Portfolio: Wide portfolio of highly anatomical moulds that **easily mix and match with Mondial i** for enhanced customization.

### NEW! Delara

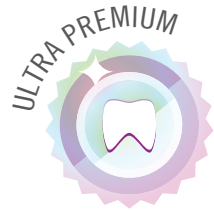
A versatile, mid-class toothline with vibrant, lifelike aesthetics.

- Aesthetics: Modern, vivid multilayering and dynamic light refraction without the yellow, gray or dull shading commonly found in other teeth.
- Portfolio: Carefully curated and optimized selection of moulds delivers a wide range of options, while **reducing inventory** and allowing for **streamlined efficiency**. Designed for **easy set-up** and **enhanced productivity**.

### Artic & Artic Digital

An aesthetically pleasing, economical toothline with superior function.

- Aesthetics: Artful multilayering with high degree of translucency on incisal and exact matching of reflection curves.
- Portfolio: **Widest range of moulds** made with four different posterior cusp angulations. Perfect occlusion for an even distribution of masticatory load; fast and easy set-up.



Artic	Delara	Mondial	Mondial i
-------	--------	---------	-----------

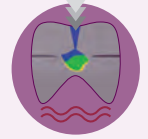
<p><b>AESTHETICS</b></p> <p><b>DURABILITY</b></p> <p>3 year warranty</p> <p><b>ANTERIORS</b> 23 Upper Moulds, 10 Lower Moulds</p> <p><b>POSTERIORIORS</b> 11 Upper Moulds, 11 Lower (0°/10°/20°/30°)</p> <p><b>SHADES</b> VITA A1 to D4, BL3</p> <p><b>MATERIALS</b> <b>PMMA and simple multilayering.</b> Unique hollow neck for improved bond to base.</p>	<p><b>AESTHETICS</b></p> <p><b>DURABILITY</b></p> <p>10 year warranty</p> <p><b>ANTERIORS</b> 18 Upper Moulds, 5 Lower Moulds</p> <p><b>POSTERIORIORS</b> 4 Upper Moulds, 4 Lower (20°)</p> <p><b>SHADES</b> VITA A1 to D4, BL2, BL3</p> <p><b>MATERIALS</b> <b>Highly cross-linked PMMA.</b> 3 layer anteriors, 2 layer posteriors. Built-in polishing buffer, grinding reserve, optimized incisal edges.</p>	<p><b>AESTHETICS</b></p> <p><b>DURABILITY</b></p> <p>12 year warranty</p> <p><b>ANTERIORS</b> 26 Upper Moulds, 10 Lower Moulds</p> <p><b>POSTERIORIORS</b> 8 Upper Moulds, 8 Lower (10°/20°)</p> <p><b>SHADES</b> VITA A1 to D4, BL2, BL3</p> <p><b>MATERIALS</b> <b>PMMA with patented Flexecure</b> for resistance to fracture, abrasion and plaque. 3 layer anteriors and posteriors.</p>	<p><b>AESTHETICS</b></p> <p><b>DURABILITY</b></p> <p>12 year warranty</p> <p><b>ANTERIORS</b> 14 Upper Moulds, 8 Lower Moulds</p> <p><b>POSTERIORIORS</b> 8 Upper Moulds, 8 Lower (5°/33°)</p> <p><b>SHADES</b> VITA A1 to D4, BL2, BL3</p> <p><b>MATERIALS</b> <b>PMMA with patented Flexecure</b> for resistance to fracture, abrasion and plaque. 3 layer anteriors and posteriors.</p>
--------------------------------------------------------------------------------------------------------------------------------------------------------------------------------------------------------------------------------------------------------------------------------------------------------------------------------------------------------------------------------------	----------------------------------------------------------------------------------------------------------------------------------------------------------------------------------------------------------------------------------------------------------------------------------------------------------------------------------------------------------------------------------------------------------------------------------------	----------------------------------------------------------------------------------------------------------------------------------------------------------------------------------------------------------------------------------------------------------------------------------------------------------------------------------------------------------------------------------------------------------------------	--------------------------------------------------------------------------------------------------------------------------------------------------------------------------------------------------------------------------------------------------------------------------------------------------------------------------------------------------------------------------------------------------------------------

Mix & Match with Pala Mondial and Mondial i Teeth!

**PRODUCTION: All Pala teeth**



- ✓ CAD/CAM compatible and digitally produced for functional precision
- ✓ Made with INCOMP (injection/compression) for void-free, reliable quality



Full Dentures  Partial Dentures	Full Dentures  Partial Dentures  Implants	Partial Dentures  Implants  Full Dentures	Implants  Partial Dentures  Full Dentures
---------------------------------------	-------------------------------------------------------	-------------------------------------------------------	-------------------------------------------------------

## What differentiates Pala Teeth?

Over 80 years of innovative solutions for quality prosthetics.

### Digital solutions for every tooth line .....

Computer Technology is now being used to aid in the design, analysis, and manufacturing of denture teeth. **State-of-the-art CAD/CAM manufacturing technology** creates absolutely identical tooth pairs for **perfect intercuspation** and **consistent functionality**.

### INCOMP manufacturing for reliable quality .....

Pala teeth are uniquely manufactured utilizing **injection** as well as traditional **compression**. Polymerization shrinkage is totally eliminated by introducing material as the teeth cure in the moulds. This results in **dense, high performing, color stable and bubble-free teeth** that have the ability to **withstand higher loads**.

### Flexecure® for highest abrasion resistance

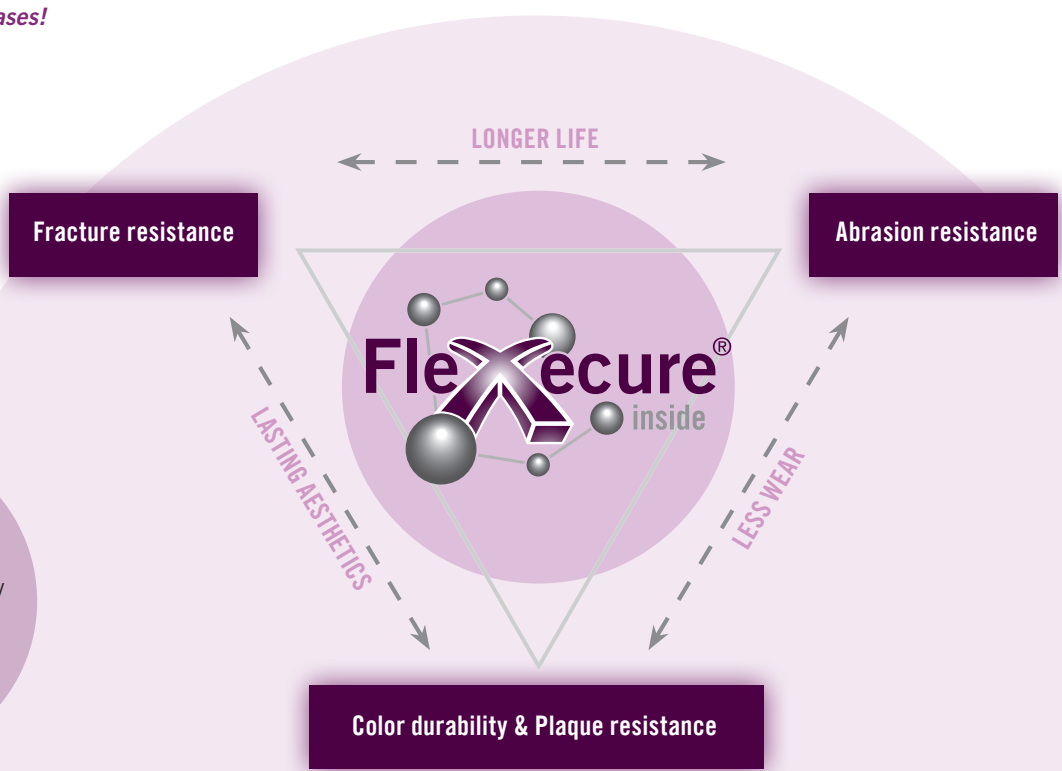
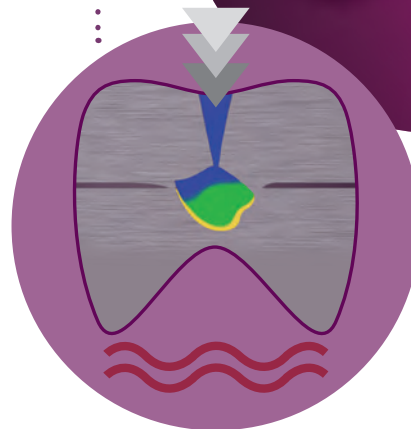
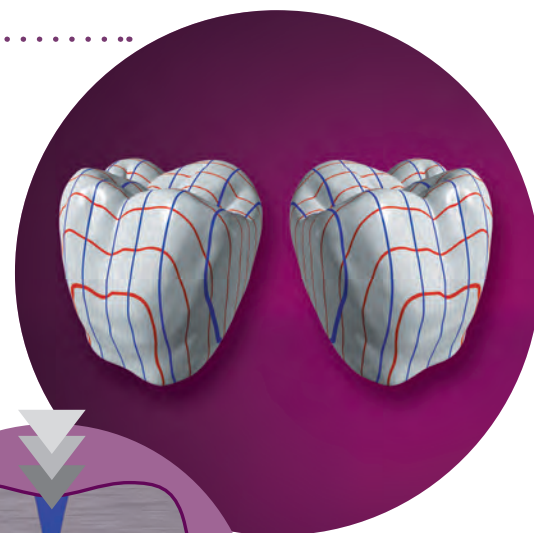
Premium Mondial and Mondial i teeth are made with **patented Flexecure**. Consisting of inorganic fillers (rubberized zones) integrated into a highly cross-linked, tough elastic matrix, Flexecure provides **exceptional color stability and unsurpassed resistance to abrasion, fracture and plaque**.

The result is teeth that have **50% greater wear resistance over conventional PMMA** and **long lasting, natural opalescence** for more dynamic appearing teeth.

..... **Mondial and Mondial i teeth with Flexecure** are an ideal solution for *implant-supported cases!*



With Flexecure, the most important artificial tooth properties are perfectly balanced for maximum longevity, less wear and lasting aesthetics.



Also from Kulzer:

## Elevate your artistry with Pala® Polish and Pala® cre-active.

Put the finishing touches on your masterpiece:

- Add **Pala Polish** to achieve a high shine and remove scratches in a single step. No pumice necessary.
- Use the **Pala cre-active** light-curing color fluid system to achieve an even more personalized, life-like look that will really wow your customers. Available as a set or in refills, Pala cre-active offers 12 colors that can be used to individualize conventional, digital, and hybrid dentures.



For more information, contact your Kulzer Sales Representative or visit [kulzerUS.com](http://kulzerUS.com)

Distributed by:  
**Kulzer, LLC**  
 4315 S. Lafayette Blvd.  
 South Bend, IN 46614  
 (800) 431-1785