

GLUMA®

Tips & Tricks



Tips & Tricks

GLUMA Desensitizer & GLUMA Desensitizer PowerGel

Giving a hand to oral health.

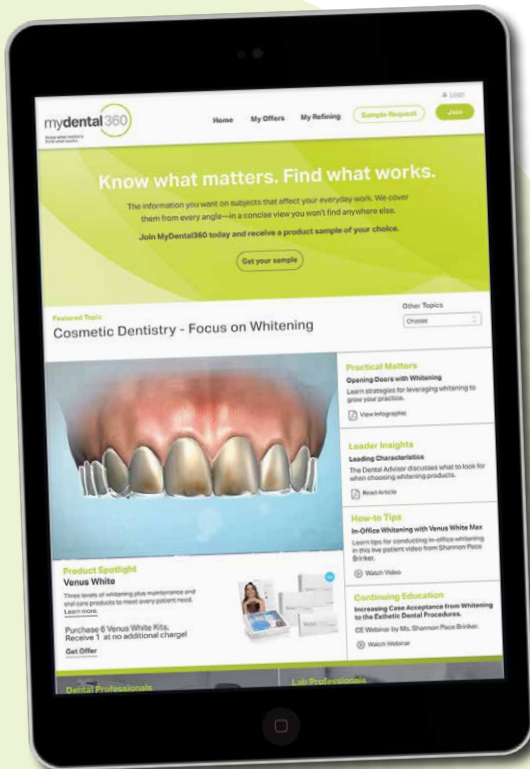


KULZER
MITSUI CHEMICALS GROUP

Watch our video to see how GLUMA Desensitizer works:



Explainer video GLUMA Desensitizer/
GLUMA Desensitizer PowerGel
youtube.com/KulzerNorthAmerica



Want more tips & tricks?

❖ Join the MyDental360 community, and
get a complimentary product sample!

mydental360.com/profile

Introduction

Hypersensitive teeth have a negative impact on patients' quality of life and can cause considerable discomfort to patients during dental treatment. GLUMA Desensitizer has been used successfully for the treatment and prevention of hypersensitive dentine since 1992. The product quickly established itself worldwide because it is easy to use, effective and reliable—both under direct and indirect restorations.

In this brochure, we want to introduce you to the easy application of GLUMA Desensitizer and GLUMA Desensitizer PowerGel for three different indications:

- Treatment of hypersensitive cervical dentine
- Prevention of post-operative discomfort after direct restorations
- Prevention of post-operative discomfort after indirect restorations.

We'll guide you through the simple application steps. See for yourself just how easy it is to protect your patients from hypersensitivity and post-operative discomfort.



Dr. med. dent. Janine Schweppe
Global Scientific Affairs Manager
Direct Restorations
Hanau (Germany), May 2018



01

Treatment of hypersensitive cervical dentine using GLUMA Desensitizer / GLUMA Desensitizer PowerGel

1. Preparation



Protect the gingiva with a rubber dam and clean the teeth using pumice slurry.



Tip: Always protect the gum to prevent glutaraldehyde-induced irritation of the gingiva.

2. Application

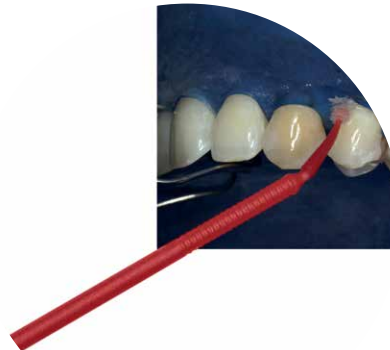
A) with GLUMA Desensitizer



GLUMA Desensitizer



Tip: It can take up to a couple of hours until the optimum desensitizing effect is achieved. In rare cases, GLUMA Desensitizer needs to be applied more than once.



Apply GLUMA Desensitizer locally on the exposed dentine in the cervical tooth area.



GLUMA Desensitizer enables

- Long-lasting reduction of dentine hypersensitivity.
- Easy application.
- Non-invasive treatment.

2. Application

B) with GLUMA Desensitizer PowerGel



GLUMA Desensitizer PowerGel



Tip: By using a dental probe the gel can be placed accurately.



Tip: Always close the syringe with its original cap. This will ensure that the product does not dry and avoid loss of product.

Apply the gel directly from the syringe ...

OR

... directly with a dental probe.

3. Exposure time



30–60
sec.

Apply GLUMA Desensitizer and GLUMA Desensitizer PowerGel for an application time of 30–60 seconds. Air dry the liquid GLUMA Desensitizer until the gloss of the liquid disappears.

4. Rinse off



Rinse off GLUMA Desensitizer and GLUMA Desensitizer PowerGel completely with plenty of water. Mouth washing of the patient alone is not sufficient.

02

Prevention of post-operative discomfort after direct restorations using GLUMA Desensitizer / GLUMA Desensitizer PowerGel

1. Preparation



Excavate and prepare the cavity for a direct composite restoration.



GLUMA Desensitizer

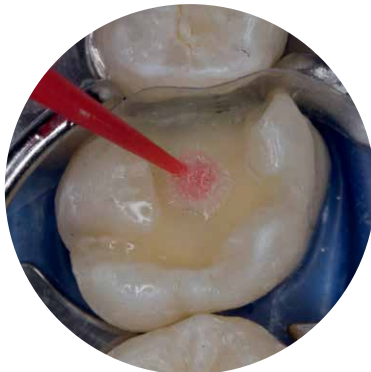


Tip: In case of a total etch treatment of the entire cavity, GLUMA Desensitizer should be applied after the etching.



2. Application

A) with GLUMA Desensitizer



30–60
sec.

Place GLUMA Desensitizer on the dentine for 30–60 sec. Then it needs to be air-dried until the gloss of the liquid disappears.



GLUMA Desensitizer ensures

- Full compatibility to all dental adhesives and luting materials.
- Quick and easy application.

2. Application

B) with GLUMA Desensitizer PowerGel



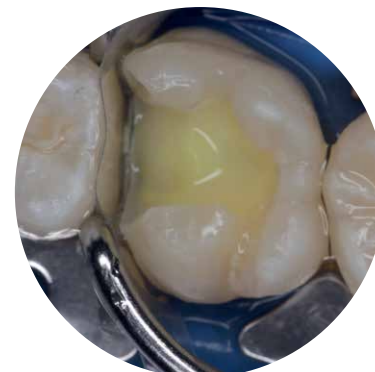
Tip: GLUMA Desensitizer/ GLUMA Desensitizer PowerGel is fully compatible with all dental adhesives and luting materials. The bond strength remains high.

30–60 sec.



Rinse off the etchant and apply GLUMA Desensitizer PowerGel for 30–60sec.

3. Rinse off



Rinse off GLUMA Desensitizer/ GLUMA Desensitizer PowerGel with plenty of water. Afterwards, remove the excess water.

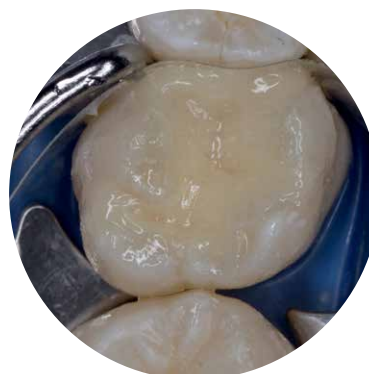
4. Application of the adhesive



iBOND Universal



Apply the adhesive (e.g. iBOND Universal) on the entire cavity.



Finally, place the composite (e.g. Venus Diamond) increments.



Venus Diamond

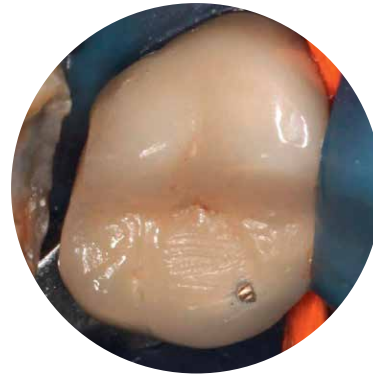
03

Prevention of post-operative discomfort after indirect restorations using GLUMA Desensitizer/GLUMA Desensitizer PowerGel

1. Preparation



Clinical situation: Insufficient Cerec ceramic partial crown on tooth 17.



Cavity preparation after mesial box elevation using iBOND Universal and Venus Diamond Flow Baseline.



iBOND Universal



Venus Diamond Flow Baseline



Tip: Apply GLUMA Desensitizer PowerGel or GLUMA Desensitizer after dentine etching.

2. Application

with GLUMA Desensitizer/
GLUMA Desensitizer PowerGel



After 30–60 sec application time, rinse the cavity with plenty of water and remove excess water.

30–60
sec.



GLUMA Desensitizer



GLUMA Desensitizer PowerGel

Apply GLUMA Desensitizer PowerGel or GLUMA Desensitizer on dentine. The liquid GLUMA Desensitizer needs to be air-dried.



Tip: The green gel consistency enables a better controlled application.

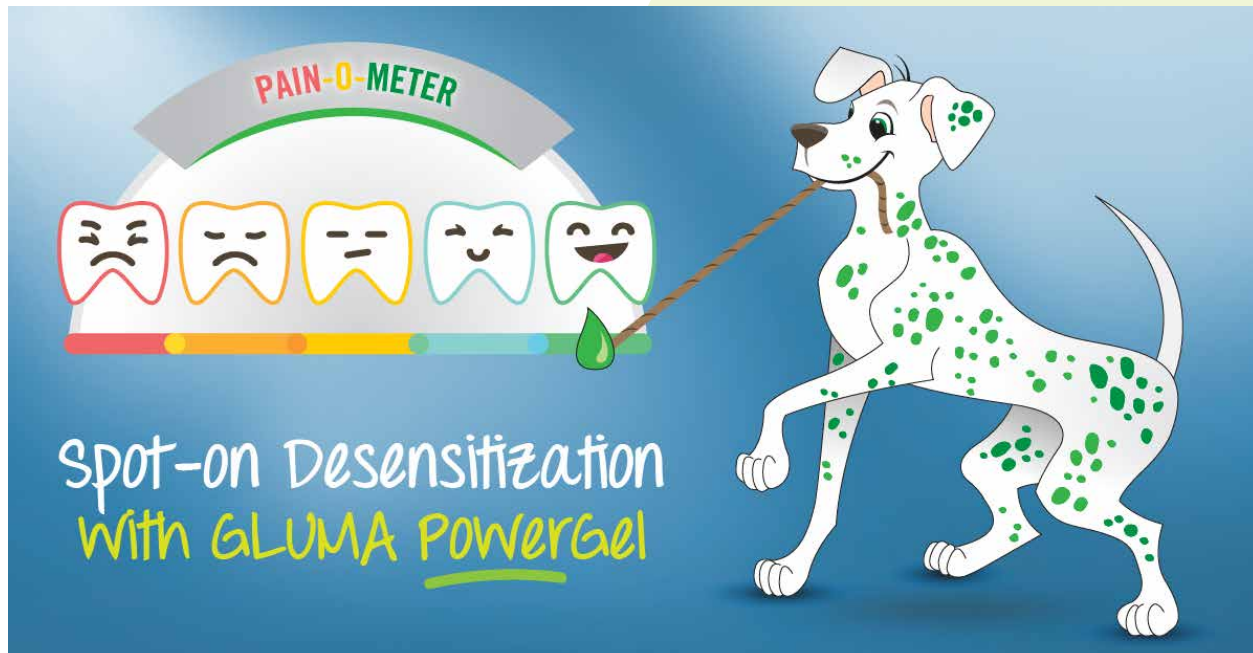


Final restoration after bonding of the cavity surface and luting of the disilicate partial crown using an adhesive cement.

For more information on GLUMA Desensitizer and GLUMA Desensitizer PowerGel, get the eBook!

PowerGelEbook.com

- ❖ STEP-BY-STEP GUIDE
- ❖ FAQs
- ❖ SCIENTIFIC INFORMATION





DOWNLOADS TAB

- Instructions for use
- Material Safety Data Sheet
- Product brochures



YOUTUBE: KULZER NORTH AMERICA

Stay up to date with the latest videos and news automatically when you subscribe to our channel.



Distributed by:
Kulzer, LLC.
4315 S. Lafayette Blvd.
South Bend, IN 46614
(800) 431-1785

Manufactured by:
Kulzer GmbH
Leipziger Straße 2
63450 Hanau, Germany
info.dent@kulzer-dental.com