

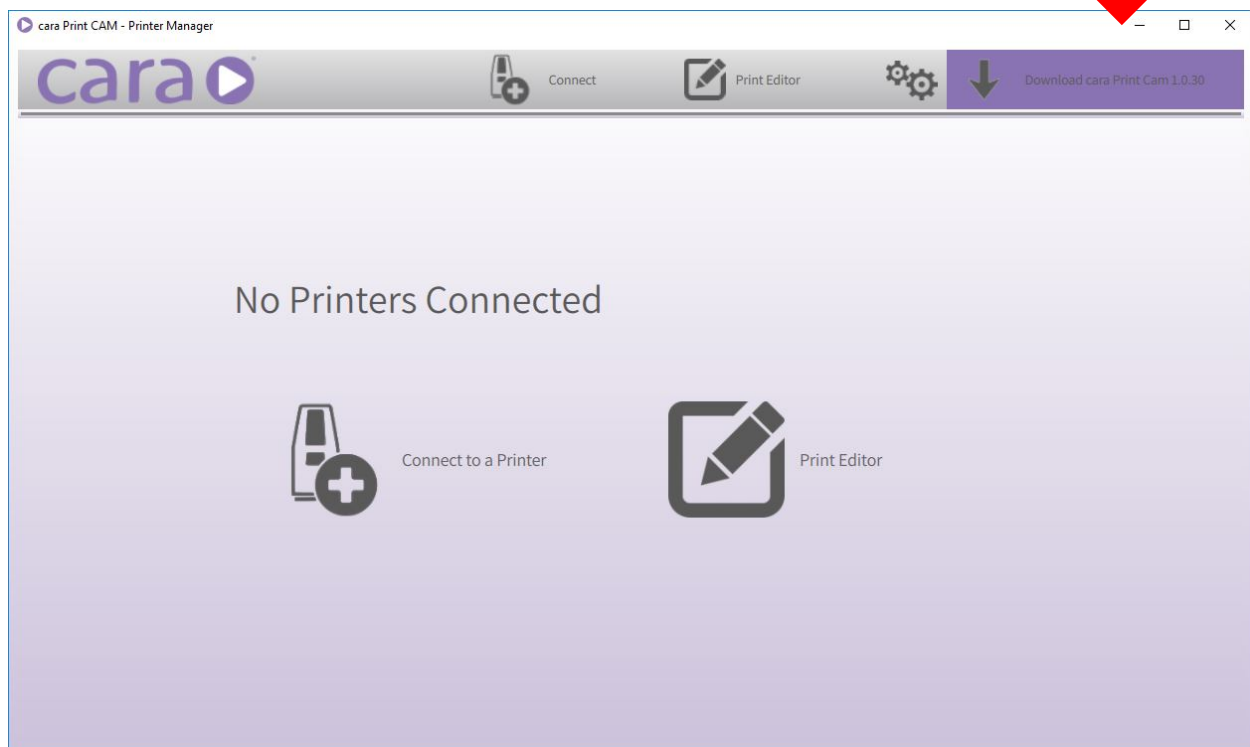
04.15.2019

## CARA PRINT CAM SOFTWARE AND FIRMWARE UPDATE

### Update Instructions for cara Print CAM 1.0.30 and cara Print 4.0 Firmware 60

For updates, the PC running the cara Print CAM must be connected to the internet. Opening the cara Print CAM will enable our servers to check for software updates. If the box in the top right corner of the cara CAM is purple, that indicates that an update is available for downloading.

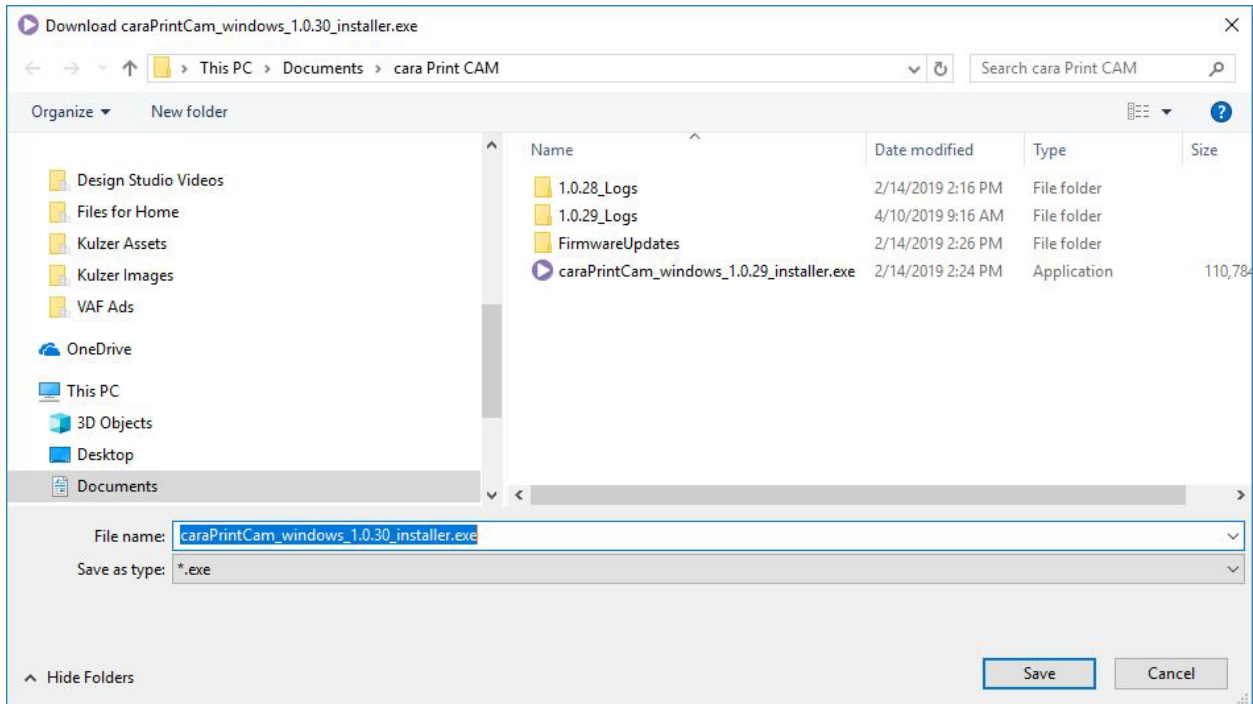
Click on the purple download box and select your folder for the download file.



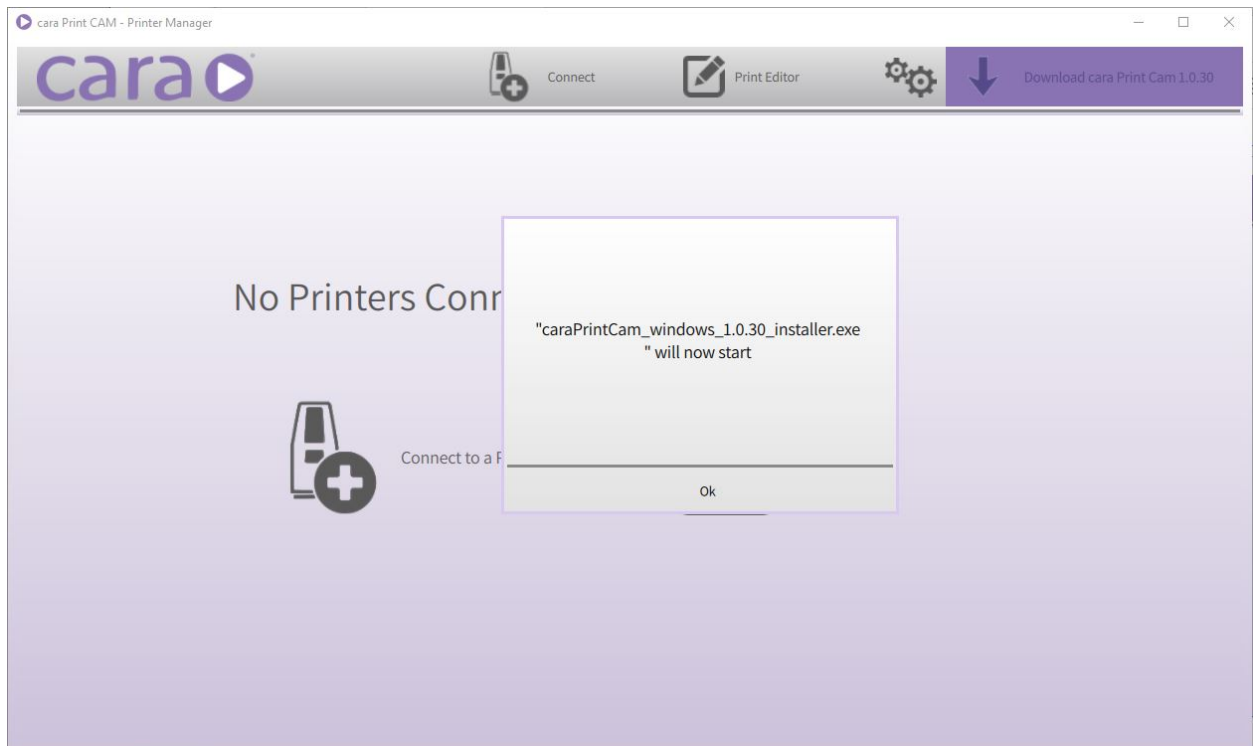
Giving a hand to oral health.



**KULZER**  
MITSUI CHEMICALS GROUP



After saving this update to your chosen file, run the update by pressing “Ok.”



Follow the instructions on the screen.

After the installation and the connection to the printer, the printer interface will indicate that a firmware update is available for the printer. Allow the firmware to be transferred to, and installed on, the printer.

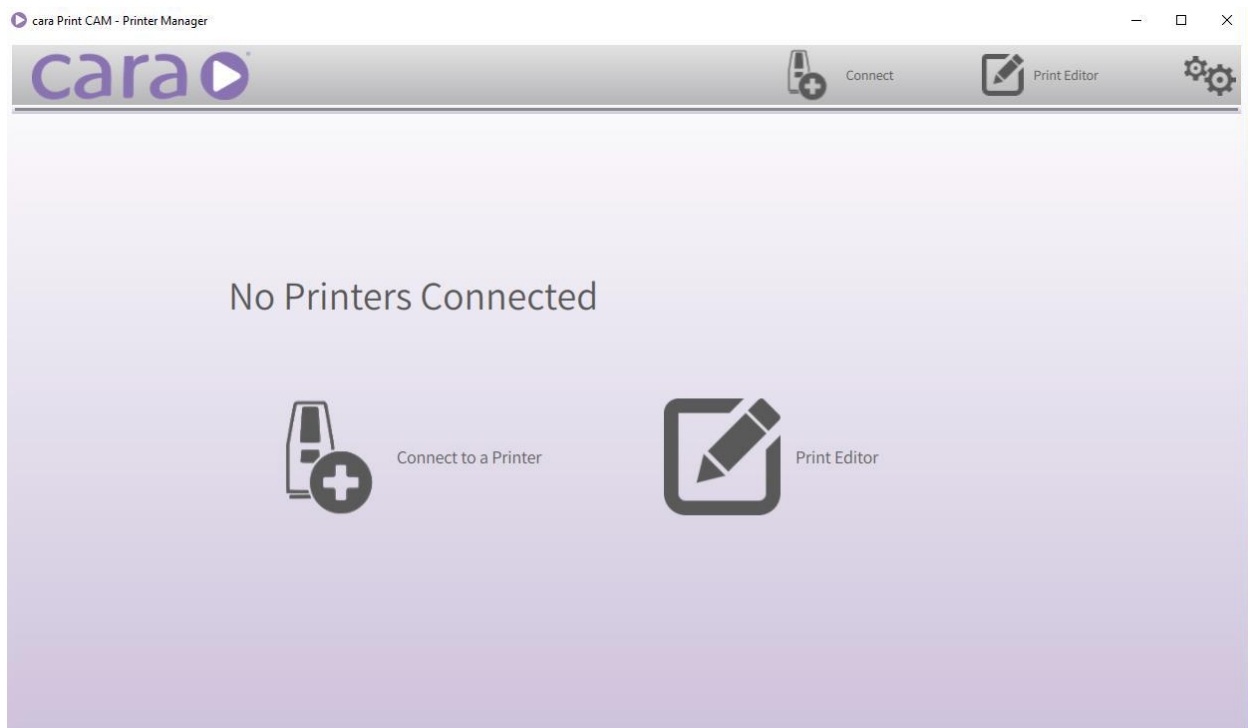
### **DO NOT RESTART THE PRINTER DURING THIS PROCESS!**

After successful installation on the printer, the printer will restart automatically and you will have the most updated settings to continue your print production.

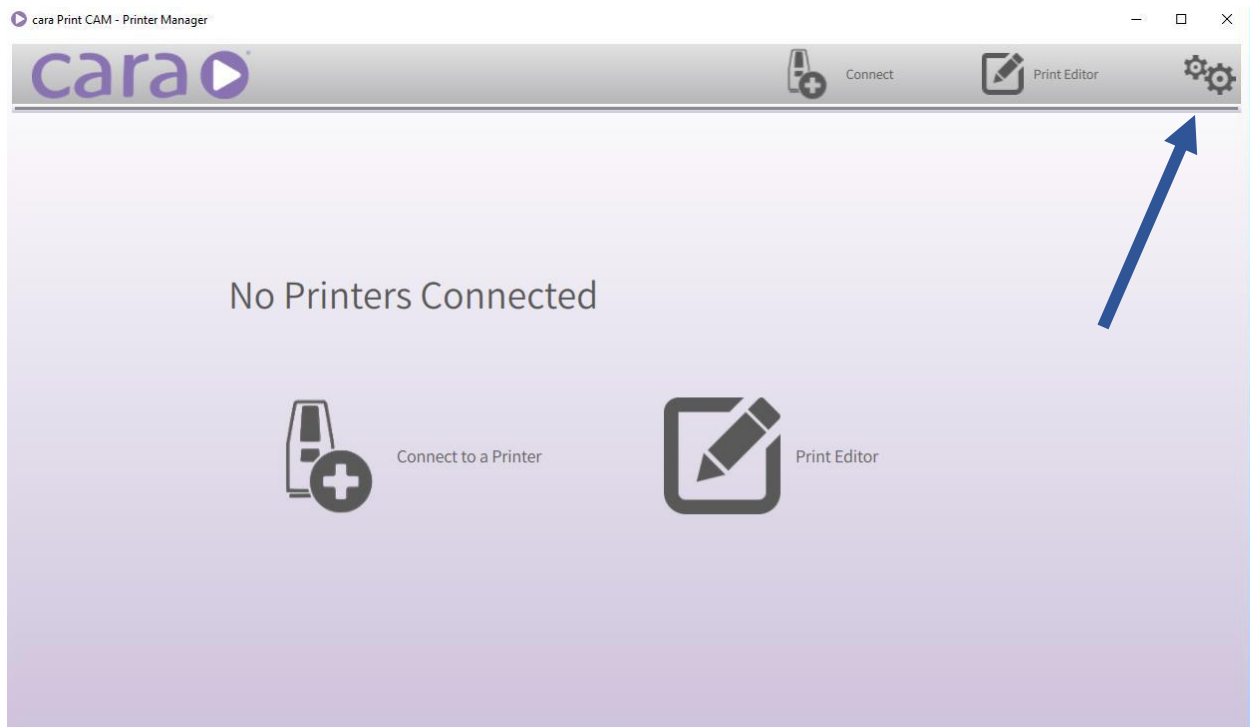
### **PRINTERS NOT CONNECTED TO THE NETWORK**

For printers not connected to the cara Print CAM PC, there will not be an indication for the firmware update because the cara Print CAM does not see the firmware installed on the printer. The Firmware can be installed manually using a USB stick.

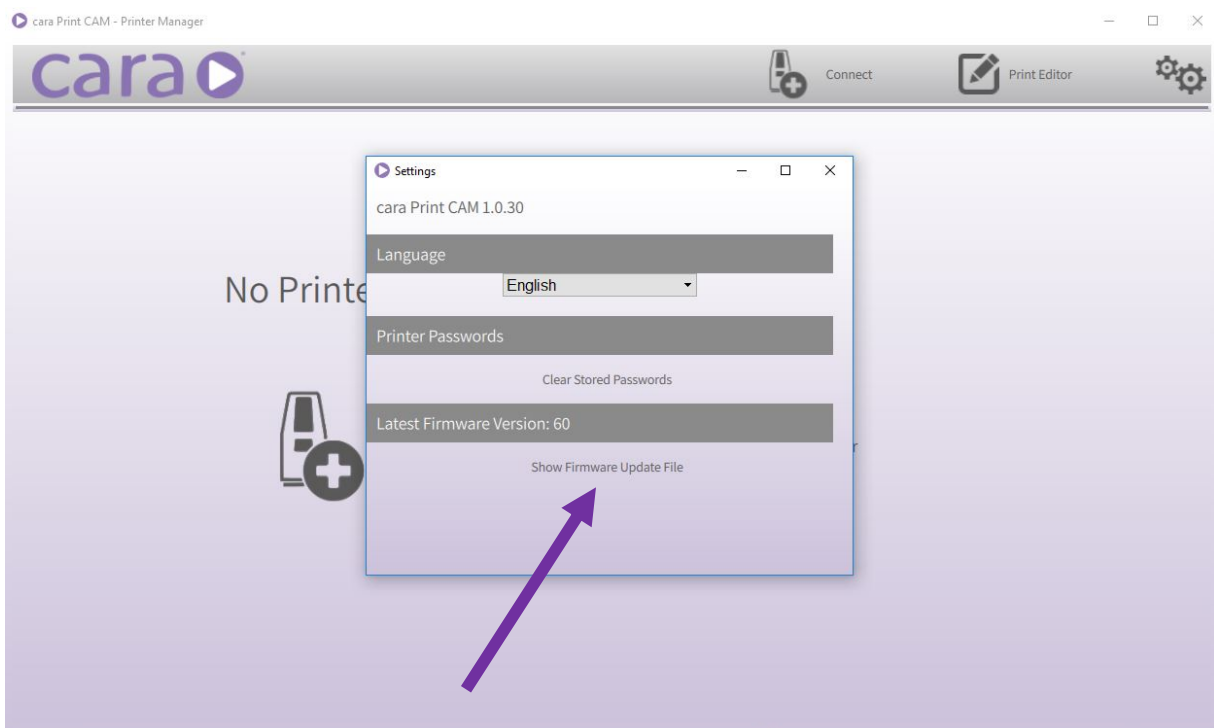
To obtain the firmware file, open the cara Print CAM software.



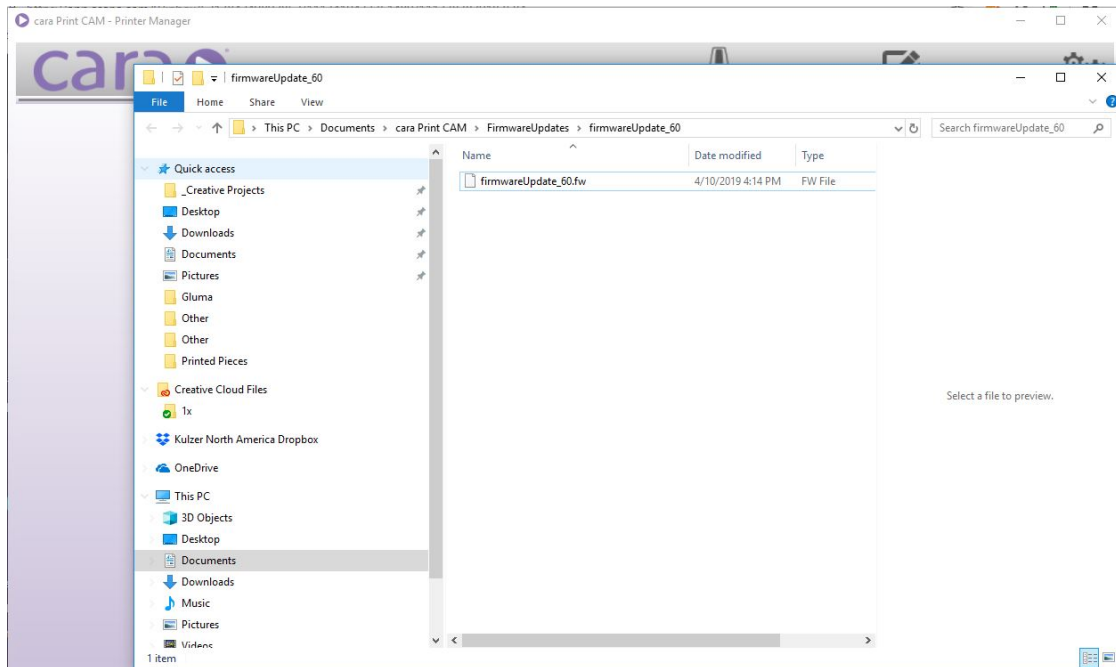
Click on the settings gearbox in the top right corner.



Then click on "Show Firmware Update File"



Download the file "firmwareUpdate\_60.fw" to your USB stick.



With the firmware update on your USB-stick, walk over to your printer and insert the stick into the front USB slot of cara Print 4.0. Once inserted, the file transfer menu should automatically pop-up. Select the firmwareUpdate\_60 file and then simply follow the instructions on the screen.

Allow the firmware to be transferred to, and installed on, your printer.

**DO NOT RESTART THE PRINTER DURING THIS PROCESS!**

Once the firmware has been installed the printer will reboot and the new settings, languages, and features will be available.