



GLUMA® Desensitizer & GLUMA® Desensitizer PowerGel
More gain, less pain.

Giving a hand to oral health.



KULZER
MITSUI CHEMICALS GROUP

GLUMA® Desensitizer / GLUMA® Desensitizer PowerGel

The success story continues.

More gain, less pain.

One of the most impairing effects on your patients' daily well-being is hypersensitivity. Sweet or sour dishes, hot or cold morsels – the acute pain is unpleasant and rather blocked out.

For more than 20 years, one drop of GLUMA has been all you need to stop and prevent hypersensitivity. The result is fast and effective, without mixing, curing or repetitive steps. And your patients feel a prompt relief.




Now, based on the well-known GLUMA Desensitizer, we have invented GLUMA Desensitizer PowerGel for you. It allows greater control and accuracy during application. Its unique green colour makes it easy to apply, easy to detect and easy to rinse clean.

GLUMA Desensitizer – Two styles, one solution against hypersensitivity.



GLUMA Desensitizer makes it a success story between you and your patients.

Your patients count on you to relieve them of their sensitivity issues. Just let them participate in the whole range of the GLUMA Desensitizer benefits.

GLUMA – From introduction to accolades					
First Desensitiser on the market			TOWNIE CHOICE AWARD	CLINICIAN'S REPORT	
1987	1997, 2000, 2008 (Top Desensitizer) Preferred Product 2013 GLUMA Desensitizer PowerGel +++++ Preferred Product 2014	2001, 2002, 2003, 2005, 2006, 2009, 2011, 2012, Desensitizer PowerGel 5 Stars 2014	2003, 2004, 2005, 2006, 2007, 2008, 2009, 2010, 2011, 2012, 2013	2009 Top Effective Product for Class II 2011 Best products of 2011	2011 Five-diamond rating in 2012 for GLUMA Desensitizer PowerGel



GLUMA – Your benefits			
Feature	Benefit	GLUMA Desensitizer	GLUMA Desensitizer PowerGel
One-step placement	No agitation or light curing required makes it easy to use and saves time	✓	✓
Universally compatible	GLUMA can be used with all bonding and restorative materials, in any situation	✓	✓
Economical	One drop, multiple applications	✓	✓
Gel consistency	Provides greater control and accuracy during placement		✓
Non-drip formula	So it stays where you place it, minimising potential contact with soft tissues		✓
Green colour indicator	Allows easy visual placement and rinse-clean capability		✓

GLUMA® Desensitizer

Easily applied – widely applicable.

How it works.

■ Desensitises:

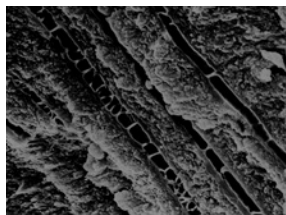
GLUMA is the only desensitizer proven to penetrate exposed dentinal tubuli up to 200 µm1. The result is the formation of multiple layers of protein septa that prevent intertubular fluid movements due to osmotic changes.

■ Inhibits bacteria:

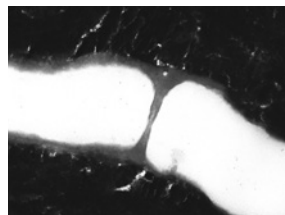
GLUMA provides a hermetic seal that acts as a microbial barrier, inhibiting bacterial growth.

■ Re-wet:

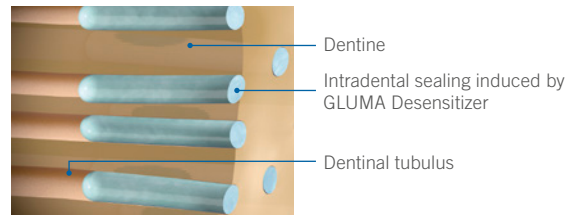
GLUMA resurrects collapsed collagenous fibres, improving the bond strength of many adhesives.



SEM of GLUMA-induced septa in dentinal tubuli.¹



SEM magnification of a single Gluma-induced septum in dentinal tube.¹



Schematic representation of effect.

Indications:

For the reduction or elimination of pain caused by hypersensitivity in exposed cervical areas that do not require restorations, and of dentine sensitivity after preparation of teeth to receive fixed prosthesis or restorations.

Specific use for doctors and hygienists:

Doctor/Assistant – Under every restoration

Use GLUMA below every restoration – direct and indirect – to ensure your patients the comfort they deserve.

- Below crowns.
- Bridges.
- Inlays and onlays.
- Veneers and temporaries.
- Margins around temporary crowns.
- Below all direct restorations.

Dental hygienist – Spot desensitise

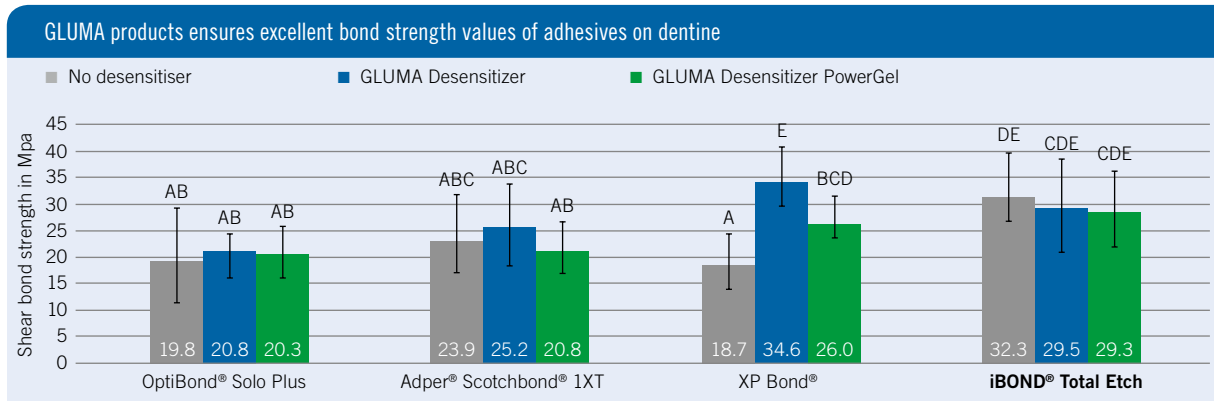
With the control of a gel and confidence of GLUMA, your patients will appreciate the fast, effective and long-term results for a more comfortable prophyl.

- Cervical erosions.
- Exposed dentine surface.
- Tooth hypersensitivity caused by gingival recession.

¹ Similar letters represent non-statistically significant differences. Source: Schweppe J, Hoffmann M, Kastrati A, Utterodt A, Riedel N, Schaub M: Effect of GLUMA Desensitizer on Bond Strength of Etch & Rinse Adhesives. J Dent Res 90 (Spec Issue A): 3172, 2011.



GLUMA – Compatibility of GLUMA products and adhesive systems.



Similar letters represent non-statistically significant differences. Source: Schewpe J, Hoffmann M, Kastrati A, Utterodt A, Riedel N, Schaub M: Effect of GLUMA Desensitizer on Bond Strength of Etch & Rinse Adhesives. J Dent Res 90 (Spec Issue A): 3172, 2011.

GLUMA – Confirmed effectiveness in closing dentinal tubuli

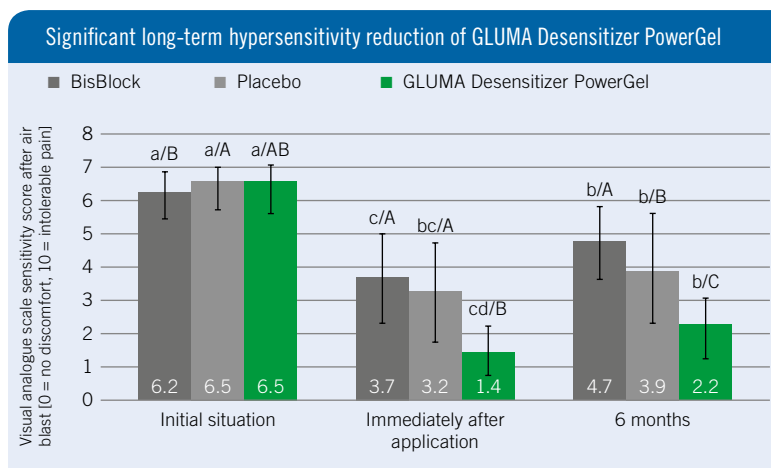


Easy application on hypersensitive cervical areas.



Easily visible and stays perfectly in place.

See more clinical studies on our webpage:



Same lower-case letters represent non-statistically significant differences of scores by time. Same upper-case letters represent non-statistically significant differences of mean scores by test substance. Source: Vora J, Mehta D, Meena N, Sushma G, Finger WJ, Kanehira M: Effects of two topical desensitising agents and placebo on dentine hypersensitivity. American Journal of Dentistry, 25 (5), 2012: 293–8.

GLUMA® and GLUMA® Desensitizer

Precision right down ...

GLUMA and GLUMA Desensitizer – More precise, more economical – with drop control.

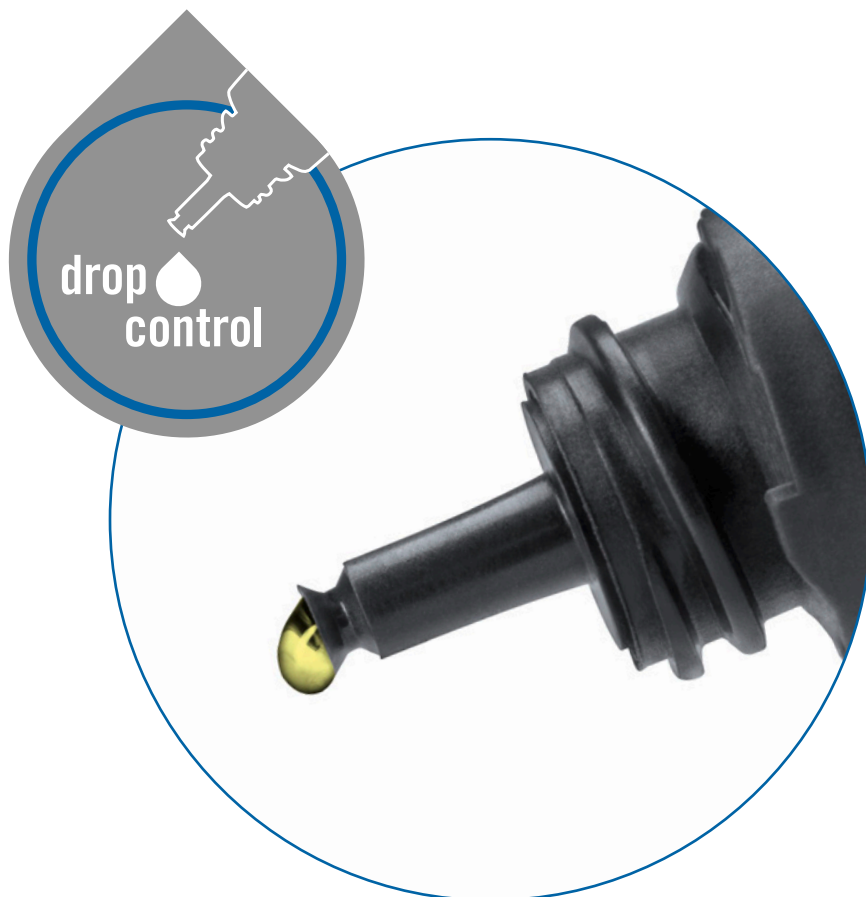
Have you and your assistant ever complained about that drop running down the dropper, jamming the cap? That becomes a thing of the past with our newly designed droppers for bonding agents and desensitizers. The notched design ensures a better cut of the drop. This not only prevents drops from running down the bottle. The new drop control entails several other benefits:

- No jamming or soiling of the opening.
- A very precise output of bonding agent: Depending on the applied pressure, you can produce a smaller or bigger drop – always with a clean cut.
- The amount of single drops goes up to 220 per bottle – saving you about 50 drops per bottle.

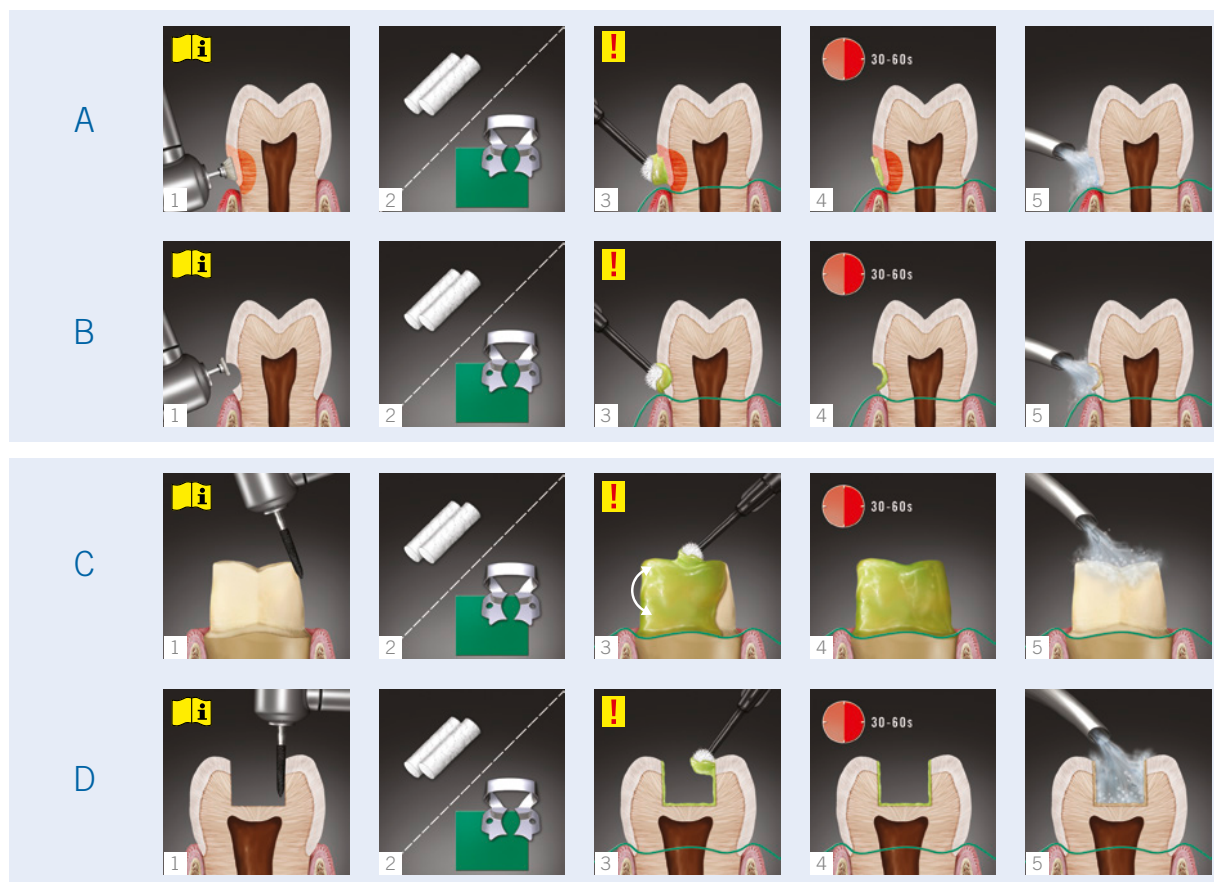
Our quality seal: It cracks with the first opening

Every bottle of bonding agent and desensitizer now also comes with a quality seal, that cracks when you first open it. This seal tells you that the bottle fulfils our quality standards and is untapped.

It is always our aim to make your daily business more convenient and efficient. You will quickly come to appreciate the precise drop control and the opening protection. Why not enjoy the comfort of quality material in well-thought packaging?



Application guide GLUMA Desensitizer PowerGel.



GLUMA Desensitizer

GLUMA Desensitizer
1x5ml Bottle
Art. code: 65872354

GLUMA Desensitizer
40x0.075 ml Single Doses
Art. code: 66001854

GLUMA Desensitizer
Value Pack
3x5 ml Bottles
Art. code: 66018221

Application Brushes
2x50 pcs Applicator Tip
Slim/Regular
Art. code: 66064661

GLUMA Desensitizer PowerGel

GLUMA Desensitizer PowerGel
Syringe Assortment
4x1g Syringes
Art. code: 66043451

Brush Cannulas
60 Pieces
Art. code: 66044334



GLUMA Desensitizer –
Available in 3 convenient delivery systems!

iBOND® Universal – All-purpose convenience.

Our definition of universal bonding is convenience:

- **Unique moisture control and instant bonding success:** Due to the unique moisture control system and optimised monomer blend, iBOND Universal offers excellent dentine penetration and reliable bond strength.
- **The all-rounder for bonding matters:** iBOND Universal enables bonding of composite, precious metal, non-precious metal, zirconia or glass ceramic, and is compatible with light-cure, dual-cure and self-cure materials.
- **Easy and precise application:** Self-etch, total-etch or selective etch – the choice is yours. In addition, our specially designed drop control delivers just the amount of bonding agent you need.



Contact in Germany

Kulzer GmbH
Leipziger Straße 2
63450 Hanau, Germany
info.dent@kulzer-dental.com

OptiBond® Solo Plus is a trademark of Kerr Corporation • XP Bond® is a trademark of Dentsply DeTrey GmbH • Adper® Scotchbond® is a trademark of 3M Company